

Anti-UBE2T Antibody (R2M04)

Summary

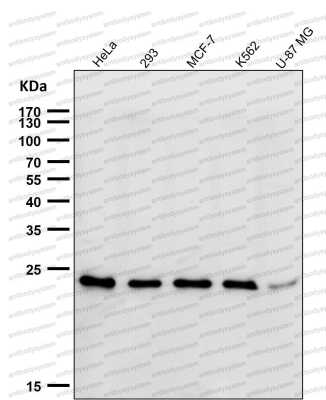
| | |
|----------------------------|---|
| Catalog No. | RHK43601 |
| Clone ID | R2M04 |
| Host species | Rabbit |
| Tested applications | WB: 1:1000-1:2000 |
| Species reactivity | Human |
| Form | Liquid |
| Storage buffer | 0.01M PBS, pH 7.4, 0.05% BSA, 50% Glycerol, 0.05% Sodium azide. |
| Concentration | 1 mg/ml |
| Purity | >95% by SDS-PAGE. |
| Clonality | Monoclonal |
| Isotype | IgG |
| Applications | WB |
| Target | Ubiquitin-protein ligase T, Ubiquitin carrier protein T, UBE2T, Cell proliferation-inducing gene 50 protein, Ubiquitin-conjugating enzyme E2 T, E2 ubiquitin-conjugating enzyme T |
| Purification | Protein A/G purified from cell culture supernatant. |
| Endotoxin level | Please contact with the lab for this information. |
| Accession | Q9NPD8 |

Stability and Storage

Use a manual defrost freezer and avoid repeated freeze thaw cycles. Store at 4 °C for frequent use. Store at -20 °C for twelve months from the date of receipt.

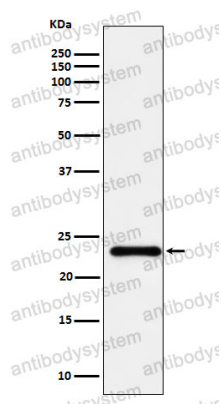
Note

For research use only.

Data Image

Western blot

All lanes use the Antibody at 1:1K dilution for 1 hour at room temperature.



Western blot

Western blot analysis of HSPC150 expression in HeLa cell lysate.