

# Anti-DDX21 Antibody (R2L99)

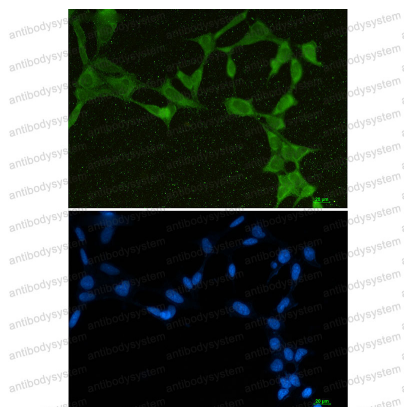
## Summary

---

<b>Catalog No.</b>	RHK42301
<b>Clone ID</b>	R2L99
<b>Host species</b>	Rabbit
<b>Tested applications</b>	IF: 1:50-1:200, WB: 1:500-1:1000
<b>Species reactivity</b>	Human
<b>Form</b>	Liquid
<b>Storage buffer</b>	0.01M PBS, pH 7.4, 0.05% BSA, 50% Glycerol, 0.05% Sodium azide.
<b>Concentration</b>	1 mg/ml
<b>Purity</b>	>95% by SDS-PAGE.
<b>Clonality</b>	Monoclonal
<b>Isotype</b>	IgG
<b>Applications</b>	IF, WB
<b>Target</b>	DEAD box protein 21, DDX21, Gu-alpha, Nucleolar RNA helicase II, RH II/Gu, Nucleolar RNA helicase Gu, Nucleolar RNA helicase 2
<b>Purification</b>	Protein A/G purified from cell culture supernatant.
<b>Endotoxin level</b>	Please contact with the lab for this information.
<b>Accession</b>	Q9NR30
<b>Stability and Storage</b>	Use a manual defrost freezer and avoid repeated freeze thaw cycles. Store at 4 °C for frequent use. Store at -20 °C for twelve months from the date of receipt.

**Note**

For research use only.

**Data Image****Immunofluorescence**

Immunocytochemistry analysis of DDX21 (green) in 293T using DDX21 antibody, and DAPI (blue).

**Western blot**

Western blot analysis of DDX21 in HeLa lysates using DDX21 antibody.