

Anti-RUVBL2 Antibody (R2L98)

Summary

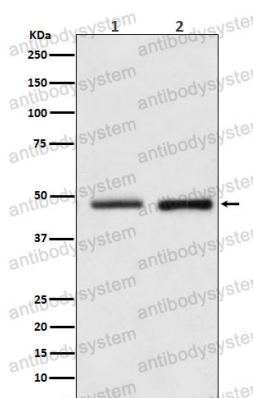
Catalog No.	RHK41701
Clone ID	R2L98
Host species	Rabbit
Tested applications	WB: 1:1000-1:2000
Species reactivity	Human, Mouse
Form	Liquid
Storage buffer	0.01M PBS, pH 7.4, 0.05% BSA, 50% Glycerol, 0.05% Sodium azide.
Concentration	1 mg/ml
Purity	>95% by SDS-PAGE.
Clonality	Monoclonal
Isotype	IgG
Applications	WB
Target	48 kDa TATA box-binding protein-interacting protein, RuvB-like 2, INO80 complex subunit J, RUVBL2, TAP54-beta, Reptin 52, TIP60-associated protein 54-beta, TIP48, TIP49B, 51 kDa erythrocyte cytosolic protein, 48 kDa TBP-interacting protein, Repressing pontin 52, INO80J, TIP49b, ECP-51
Purification	Protein A/G purified from cell culture supernatant.
Endotoxin level	Please contact with the lab for this information.
Accession	Q9Y230

Stability and Storage

Use a manual defrost freezer and avoid repeated freeze thaw cycles. Store at 4 °C for frequent use. Store at -20 °C for twelve months from the date of receipt.

Note

For research use only.

Data Image

Western blot

Western blot analysis of Reptin / RUVBL2 expression in (1) HeLa cell lysate; (2) NIH/3T3 cell lysate.