

Anti-PGC1 alpha/beta Antibody (R2L90)

Summary

Catalog No.	RHK37301
Clone ID	R2L90
Host species	Rabbit
Tested applications	IF: 1:50-1:200, WB: 1:1000-1:2000
Species reactivity	Human, Mouse, Rat
Form	Liquid
Storage buffer	0.01M PBS, pH 7.4, 0.05% BSA, 50% Glycerol, 0.05% Sodium azide.
Concentration	1 mg/ml
Purity	>95% by SDS-PAGE.
Clonality	Monoclonal
Isotype	IgG
Applications	IF, WB
Target	LEM6, PGC1A, PPARGC1, Ligand effect modulator 6, PGC-1-alpha, PPAR-gamma coactivator 1-alpha, Peroxisome proliferator-activated receptor gamma coactivator 1-alpha, PPARGC-1-alpha, PPARGC1A, PGC1
Purification	Protein A/G purified from cell culture supernatant.
Endotoxin level	Please contact with the lab for this information.
Accession	Q9UBK2

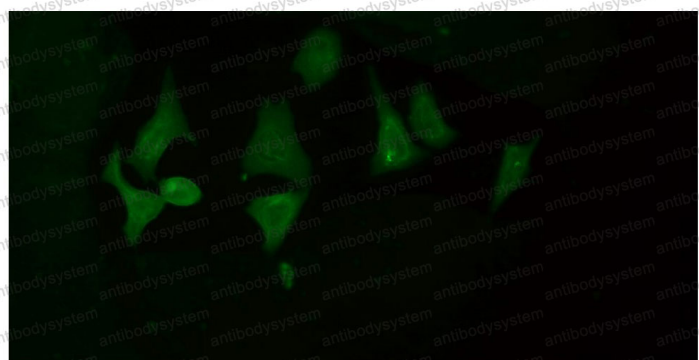
Recombinant Proteins & Antibodies

Stability and Storage

Use a manual defrost freezer and avoid repeated freeze thaw cycles. Store at 4 °C for frequent use. Store at -20 °C for twelve months from the date of receipt.

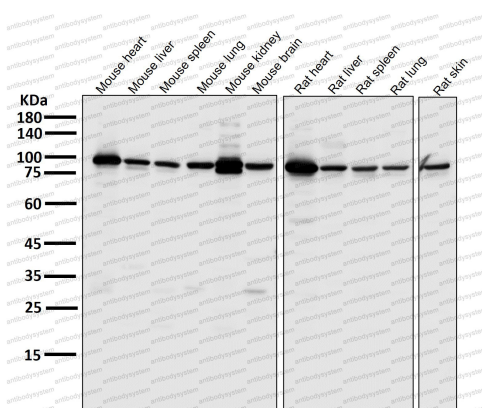
Note

For research use only.

Data Image

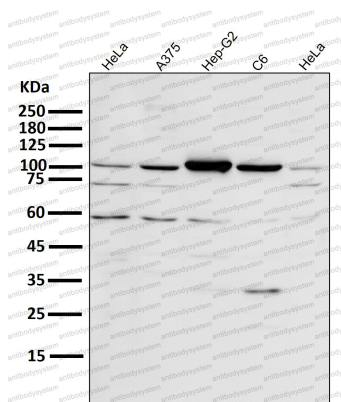
Immunofluorescent analysis of hela cells using the Antibody at 1:150 dilution.

Immunofluorescence



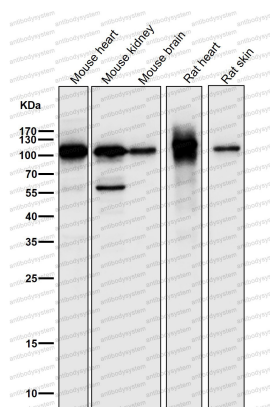
Western blot

All lanes use the Antibody at 1:1000 dilution for 1 hour at room temperature.



Western blot

All lanes use the Antibody at 1:1000 dilution for 1 hour at room temperature.



Western blot

All lanes use the Antibody at 1:1000 dilution for 1 hour at room temperature.