

Anti-BBC3 Antibody (R2L89)

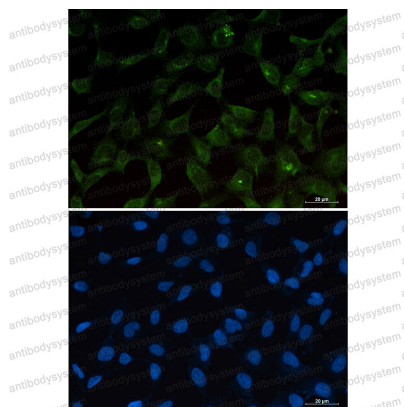
Summary

Catalog No.	RHK37102
Clone ID	R2L89
Host species	Rabbit
Tested applications	IF: 1:50-1:200, IHC: 1:50-1:100, WB: 1:500-1:1000
Species reactivity	Human, Mouse, Rat
Form	Liquid
Storage buffer	0.01M PBS, pH 7.4, 0.05% BSA, 50% Glycerol, 0.05% Sodium azide.
Concentration	1 mg/ml
Purity	>95% by SDS-PAGE.
Clonality	Monoclonal
Isotype	IgG
Applications	IF, IHC, WB
Target	p53 up-regulated modulator of apoptosis, BBC3, JFY-1, PUMA, Bcl-2-binding component 3, isoforms 1/2
Purification	Protein A/G purified from cell culture supernatant.
Endotoxin level	Please contact with the lab for this information.
Accession	Q9BXH1
Stability and Storage	Use a manual defrost freezer and avoid repeated freeze thaw cycles. Store at 4 °C for frequent use. Store at -20 °C for twelve months from the date of receipt.

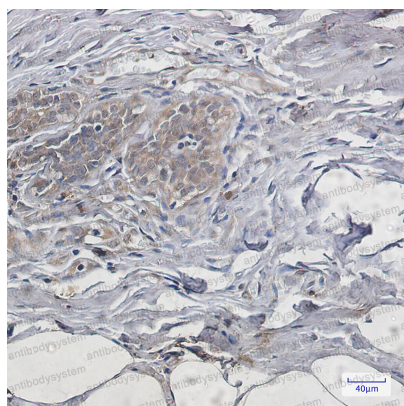
Note

For research use only.

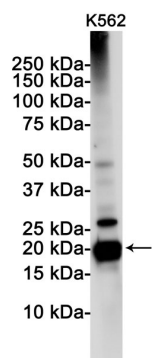
Data Image

**Immunofluorescence**

Immunocytochemistry analysis of PUMA (green) in 293T using PUMA antibody, and DAPI (blue).

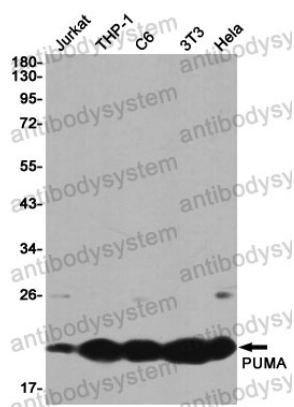
**Immunohistochemical**

Immunohistochemistry analysis of paraffin-embedded Human breast cancer using PUMA antibody. High-pressure and temperature Sodium Citrate pH 6.0 was used for antigen retrieval.



Western blot analysis of PUMA in K562 lysates using PUMA antibody.

Western blot



Western blot analysis of PUMA in Jurkat, THP-1, C6, 3T3, Hela lysates using PUMA antibody

Western blot