

# Anti-MRPS18B Antibody (R2L86)

## Summary

---

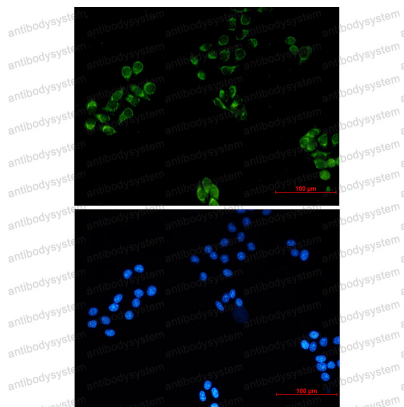
<b>Catalog No.</b>	RHK36701
<b>Clone ID</b>	R2L86
<b>Host species</b>	Rabbit
<b>Tested applications</b>	IF: 1:50-1:200, IP: 1:20, WB: 1:500-1:1000
<b>Species reactivity</b>	Human, Mouse, Rat
<b>Form</b>	Liquid
<b>Storage buffer</b>	0.01M PBS, pH 7.4, 0.05% BSA, 50% Glycerol, 0.05% Sodium azide.
<b>Concentration</b>	1 mg/ml
<b>Purity</b>	>95% by SDS-PAGE.
<b>Clonality</b>	Monoclonal
<b>Isotype</b>	IgG
<b>Applications</b>	IF, IP, WB
<b>Target</b>	C6orf14, MRP-S18-2, Mitochondrial small ribosomal subunit protein bS18b, Mitochondrial small ribosomal subunit protein mS40, MRPS18B, MRP-S18-b, 28S ribosomal protein S18b, mitochondrial, S18mt-b, 28S ribosomal protein S18-2, mitochondrial, Mrps18-b
<b>Purification</b>	Protein A/G purified from cell culture supernatant.
<b>Endotoxin level</b>	Please contact with the lab for this information.
<b>Accession</b>	Q9Y676

**Stability and Storage**

Use a manual defrost freezer and avoid repeated freeze thaw cycles. Store at 4 °C for frequent use. Store at -20 °C for twelve months from the date of receipt.

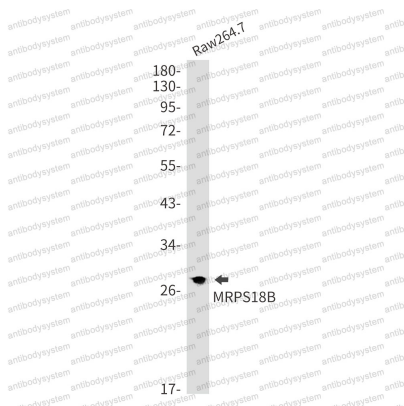
**Note**

For research use only.

**Data Image**

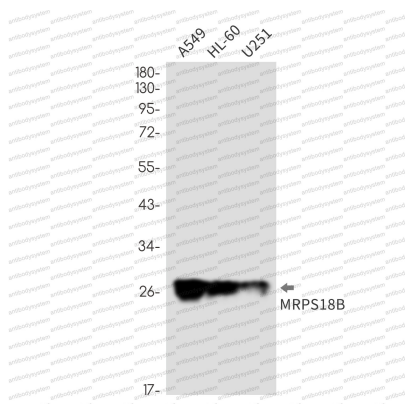
Immunofluorescence

Immunocytochemistry analysis of MRPS18B (green) in Hela using MRPS18B antibody, and DAPI(blue)



Western blot

Western blot analysis of MRPS18B in Raw264.7 lysates using MRPS18B antibody.



Western blot

Western blot analysis of MRPS18B in A549, HL-60, U251 lysates using MRPS18B antibody.