

Anti-SIRT3 Antibody (R2L85)

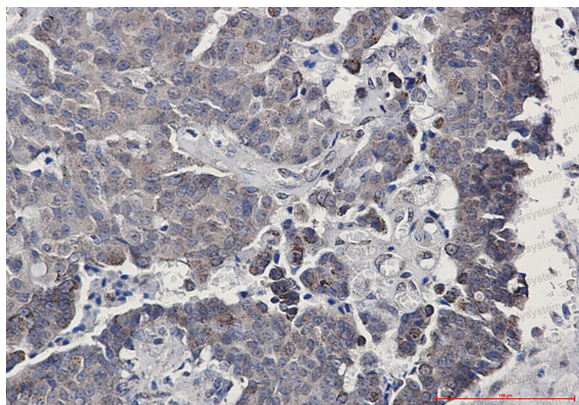
Summary

| | |
|------------------------------|---|
| Catalog No. | RHK36601 |
| Clone ID | R2L85 |
| Host species | Rabbit |
| Tested applications | IHC: 1:50-1:100, WB: 1:500-1:1000 |
| Species reactivity | Human |
| Form | Liquid |
| Storage buffer | 0.01M PBS, pH 7.4, 0.05% BSA, 50% Glycerol, 0.05% Sodium azide. |
| Concentration | 1 mg/ml |
| Purity | >95% by SDS-PAGE. |
| Clonality | Monoclonal |
| Isotype | IgG |
| Applications | IHC, WB |
| Target | NAD-dependent protein deacetylase sirtuin-3, mitochondrial, SIR2-like protein 3, SIRT3, Regulatory protein SIR2 homolog 3, SIR2L3, hSIRT3 |
| Purification | Protein A/G purified from cell culture supernatant. |
| Endotoxin level | Please contact with the lab for this information. |
| Accession | Q9NTG7 |
| Stability and Storage | Use a manual defrost freezer and avoid repeated freeze thaw cycles. Store at 4 °C for frequent use. Store at -20 °C for twelve months from the date of receipt. |

Note

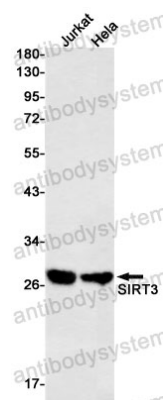
For research use only.

Data Image



Immunohistochemical

Immunohistochemistry analysis of paraffin-embedded Human breast cancer using SIRT3 antibody. High-pressure and temperature Sodium Citrate pH 6.0 was used for antigen retrieval.



Western blot

Western blot analysis of SIRT3 in Jurkat, HeLa lysates using SIRT3 antibody.