

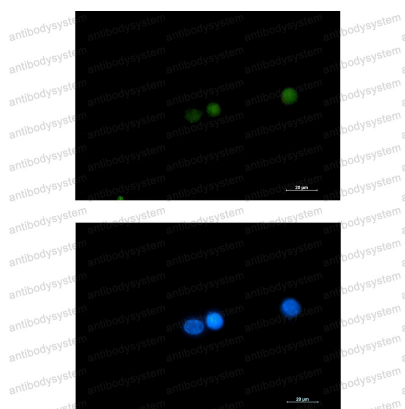
Anti-DGCR8 Antibody (R2L81)

Summary

Catalog No.	RHK35602
Clone ID	R2L81
Host species	Rabbit
Tested applications	IF: 1:50-1:200, IP: 1:20, WB: 1:500-1:1000
Species reactivity	Human, Mouse, Rat
Form	Liquid
Storage buffer	0.01M PBS, pH 7.4, 0.05% BSA, 50% Glycerol, 0.05% Sodium azide.
Concentration	1 mg/ml
Purity	>95% by SDS-PAGE.
Clonality	Monoclonal
Isotype	IgG
Applications	IF, IP, WB
Target	DGCRK6, Microprocessor complex subunit DGCR8, DiGeorge syndrome critical region 8, DGCR8, C22orf12
Purification	Protein A/G purified from cell culture supernatant.
Endotoxin level	Please contact with the lab for this information.
Accession	Q8WYQ5
Stability and Storage	Use a manual defrost freezer and avoid repeated freeze thaw cycles. Store at 4 °C for frequent use. Store at -20 °C for twelve months from the date of receipt.

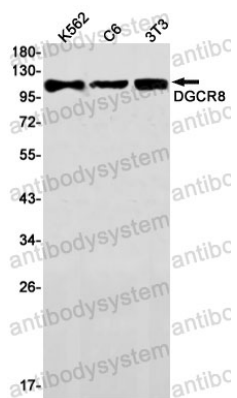
Note For research use only.

Data Image



Immunofluorescence

Immunocytochemistry analysis of DGCR8 (green) in K562 using DGCR8 antibody, and DAPI(blue).



Western blot

Western blot analysis of DGCR8 in K562, C6, 3T3 lysates using DGCR8 antibody.