

Anti-ATG4A Antibody (R2L79)

Summary

Catalog No.	RHK34601
Clone ID	R2L79
Host species	Rabbit
Tested applications	IHC: 1:50-1:100, IP: 1:20, WB: 1:500-1:1000
Species reactivity	Human
Form	Liquid
Storage buffer	0.01M PBS, pH 7.4, 0.05% BSA, 50% Glycerol, 0.05% Sodium azide.
Concentration	1 mg/ml
Purity	>95% by SDS-PAGE.
Clonality	Monoclonal
Isotype	IgG
Applications	IHC, IP, WB
Target	hAPG4A, Cysteine protease ATG4A, ATG4A, AUTL2, Autophagin-2, APG4A, AUT-like 2 cysteine endopeptidase, Autophagy-related protein 4 homolog A, Autophagy-related cysteine endopeptidase 2
Purification	Protein A/G purified from cell culture supernatant.
Endotoxin level	Please contact with the lab for this information.
Accession	Q8WYN0

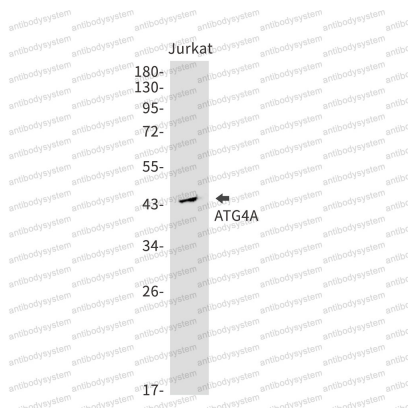
Recombinant Proteins & Antibodies

Stability and Storage

Use a manual defrost freezer and avoid repeated freeze thaw cycles. Store at 4 °C for frequent use. Store at -20 °C for twelve months from the date of receipt.

Note

For research use only.

Data Image

Western blot

Western blot analysis of ATG4A in Jurkat lysates using ATG4A antibody.