

Anti-NSD3/WHSC1L1 Antibody (R2L73)

Summary

Catalog No.	RHK22004
Clone ID	R2L73
Host species	Rabbit
Tested applications	FCM: 1:20-1:100, WB: 1:1000-1:2000
Species reactivity	Human, Mouse, Rat
Form	Liquid
Storage buffer	0.01M PBS, pH 7.4, 0.05% BSA, 50% Glycerol, 0.05% Sodium azide.
Concentration	1 mg/ml
Purity	>95% by SDS-PAGE.
Clonality	Monoclonal
Isotype	IgG
Applications	FCM, WB
Target	Wolf-Hirschhorn syndrome candidate 1-like protein 1, NSD3, WHSC1-like 1 isoform 9 with methyltransferase activity to lysine, Nuclear SET domain-containing protein 3, WHSC1-like protein 1, WHSC1L1, Protein whistle, Histone-lysine N-methyltransferase NSD3
Purification	Protein A/G purified from cell culture supernatant.
Endotoxin level	Please contact with the lab for this information.
Accession	Q9BZ95

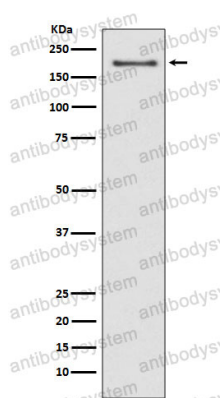
Stability and Storage

Use a manual defrost freezer and avoid repeated freeze thaw cycles. Store at 4 °C for frequent use. Store at -20 °C for twelve months from the date of receipt.

Note

For research use only.

Data Image



Western blot

Western blot analysis of NSD3 expression in MCF-7 cell lysate.