

Anti-SMYD3 Antibody (R2L71)

Summary

| | |
|----------------------------|--|
| Catalog No. | RHK20902 |
| Clone ID | R2L71 |
| Host species | Rabbit |
| Tested applications | FCM: 1:20-1:100, IF: 1:50-1:200, IHC: 1:100-1:200, IP: 1:20-1:50, WB: 1:1000-1:2000 |
| Species reactivity | Human, Mouse, Rat |
| Form | Liquid |
| Storage buffer | 0.01M PBS, pH 7.4, 0.05% BSA, 50% Glycerol, 0.05% Sodium azide. |
| Concentration | 1 mg/ml |
| Purity | >95% by SDS-PAGE. |
| Clonality | Monoclonal |
| Isotype | IgG |
| Applications | FCM, IF, IHC, IP, WB |
| Target | Zinc finger MYND domain-containing protein 1, SET and MYND domain-containing protein 3, SMYD3, ZMYND1, Histone-lysine N-methyltransferase SMYD3, ZNFN3A1 |
| Purification | Protein A/G purified from cell culture supernatant. |
| Endotoxin level | Please contact with the lab for this information. |
| Accession | Q9H7B4 |

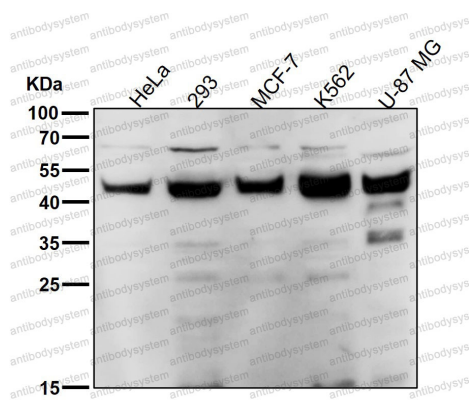
Stability and Storage

Use a manual defrost freezer and avoid repeated freeze thaw cycles. Store at 4 °C for frequent use. Store at -20 °C for twelve months from the date of receipt.

Note

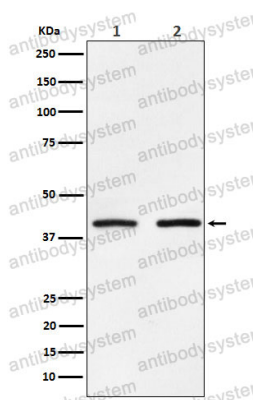
For research use only.

Data Image



Western blot

All lanes use the Antibody at 1:2K dilution for 1 hour at room temperature.



Western blot

Western blot analysis of SMYD3 expression in (1) HeLa cell lysate; (2) NIH/3T3 cell lysate.