

Anti-PHF8 Antibody (R2L69)

Summary

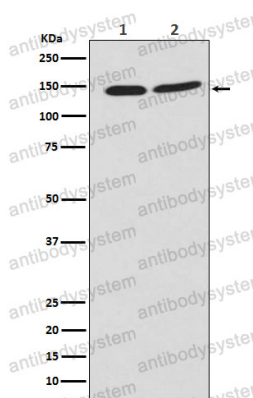
Catalog No.	RHK19802
Clone ID	R2L69
Host species	Rabbit
Tested applications	IF: 1:50-1:200, IP: 1:20-1:50, WB: 1:1000-1:2000
Species reactivity	Human, Mouse, Rat
Form	Liquid
Storage buffer	0.01M PBS, pH 7.4, 0.05% BSA, 50% Glycerol, 0.05% Sodium azide.
Concentration	1 mg/ml
Purity	>95% by SDS-PAGE.
Clonality	Monoclonal
Isotype	IgG
Applications	IF, IP, WB
Target	[histone H3]-dimethyl-L-lysine(9) demethylase PHF8, KIAA1111, [histone H3]-dimethyl-L-lysine(36) demethylase PHF8, PHF8, ZNF422, Histone lysine demethylase PHF8, PHD finger protein 8
Purification	Protein A/G purified from cell culture supernatant.
Endotoxin level	Please contact with the lab for this information.
Accession	Q9UPP1

Stability and Storage

Use a manual defrost freezer and avoid repeated freeze thaw cycles. Store at 4 °C for frequent use. Store at -20 °C for twelve months from the date of receipt.

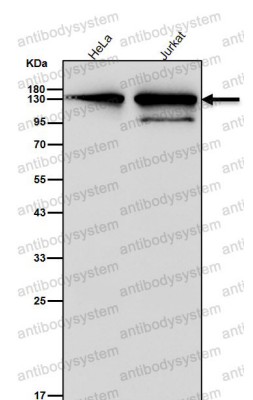
Note

For research use only.

Data Image

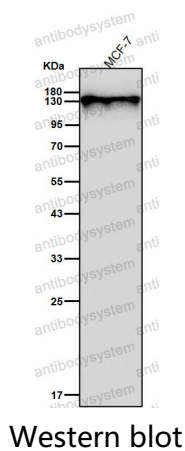
Western blot

Western blot analysis of PHF8 expression in (1) Jurkat cell lysate; (2) NIH/3T3 cell lysate.



Western blot

All lanes use the Antibody at 1:2K dilution for 1 hour at room temperature.



All lanes use the Antibody at 1:2K dilution for 1 hour at room temperature.