

Anti-PBK Antibody (R2L68)

Summary

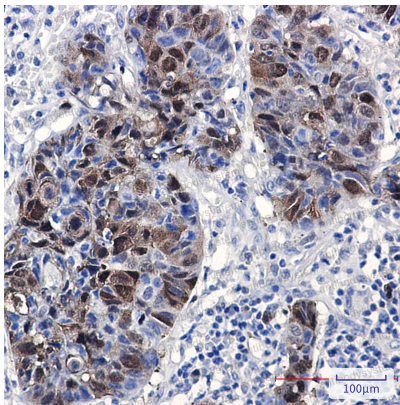
Catalog No.	RHK19703
Clone ID	R2L68
Host species	Rabbit
Tested applications	IHC: 1:50-1:100, IP: 1:20, WB: 1:500-1:1000
Species reactivity	Human, Rat
Form	Liquid
Storage buffer	0.01M PBS, pH 7.4, 0.05% BSA, 50% Glycerol, 0.05% Sodium azide.
Concentration	1 mg/ml
Purity	>95% by SDS-PAGE.
Clonality	Monoclonal
Isotype	IgG
Applications	IHC, IP, WB
Target	Nori-3, SPK, Lymphokine-activated killer T-cell-originated protein kinase, PDZ-binding kinase, Spermatogenesis-related protein kinase, PBK, TOPK, CT84, T-LAK cell-originated protein kinase, Cancer/testis antigen 84, MAPKK-like protein kinase
Purification	Protein A/G purified from cell culture supernatant.
Endotoxin level	Please contact with the lab for this information.
Accession	Q96KB5

Stability and Storage

Use a manual defrost freezer and avoid repeated freeze thaw cycles. Store at 4 °C for frequent use. Store at -20 °C for twelve months from the date of receipt.

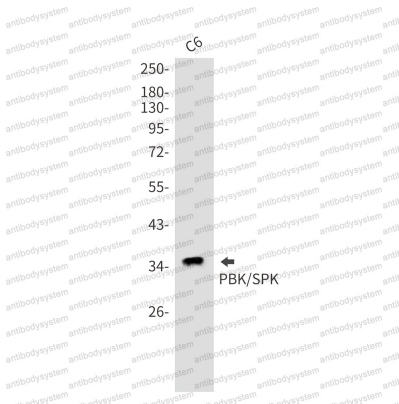
Note

For research use only.

Data Image

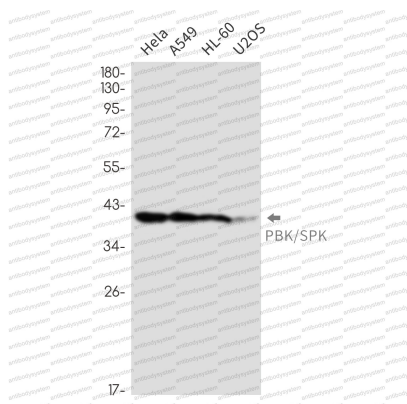
Immunohistochemical

Immunohistochemistry analysis of paraffin-embedded Human lung cancer using PBK/SPK antibody. High-pressure and temperature Sodium Citrate pH 6.0 was used for antigen retrieval.



Western blot

Western blot analysis of PBK/SPK in C6 lysates using PBK antibody.



Western blot

Western blot analysis of PBK/SPK in Hela, A549, HL-60, U2OS lysates using PBK/SPK antibody.