

Anti-DOT1L Antibody (R2L65)

Summary

Catalog No.	RHK19103
Clone ID	R2L65
Host species	Rabbit
Tested applications	IHC: 1:50-1:100, WB: 1:500-1:1000
Species reactivity	Human, Mouse
Form	Liquid
Storage buffer	0.01M PBS, pH 7.4, 0.05% BSA, 50% Glycerol, 0.05% Sodium azide.
Concentration	1 mg/ml
Purity	>95% by SDS-PAGE.
Clonality	Monoclonal
Isotype	IgG
Applications	IHC, WB
Target	DOT1-like protein, Lysine N-methyltransferase 4, DOT1L, Histone-lysine N-methyltransferase, H3 lysine-79 specific, KMT4, H3-K79-HMTase, KIAA1814, Histone H3-K79 methyltransferase
Purification	Protein A/G purified from cell culture supernatant.
Endotoxin level	Please contact with the lab for this information.
Accession	Q8TEK3

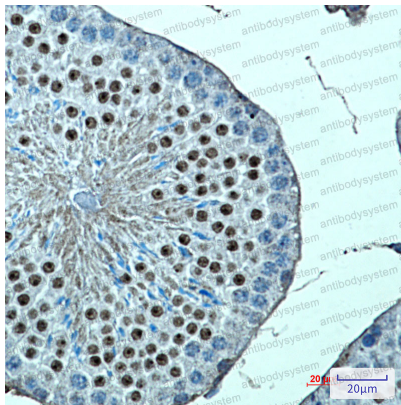
Stability and Storage

Use a manual defrost freezer and avoid repeated freeze thaw cycles. Store at 4 °C for frequent use. Store at -20 °C for twelve months from the date of receipt.

Note

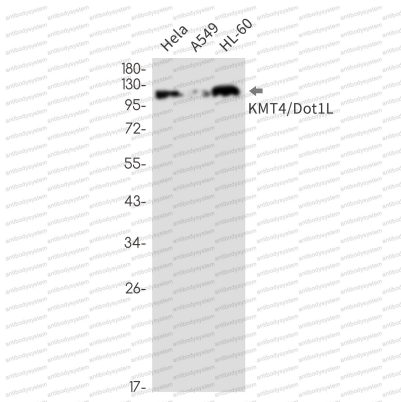
For research use only.

Data Image



Immunohistochemical

Immunohistochemistry analysis of paraffin-embedded mouse testis using KMT4 antibody. High-pressure and temperature Sodium Citrate pH 6.0 was used for antigen retrieval.



Western blot

Western blot analysis of KMT4/Dot1L in HeLa, A549, HL-60 lysates using KMT4/Dot1L antibody.