

Anti-SCARB1/SR-BI/CLA-1/SRB1 Antibody (R2L60)

Summary

Catalog No.	RHK08801
Clone ID	R2L60
Host species	Rabbit
Tested applications	WB: 1:500-1:1000
Species reactivity	Human, Mouse, Rat
Form	Liquid
Storage buffer	0.01M PBS, pH 7.4, 0.05% BSA, 50% Glycerol, 0.05% Sodium azide.
Concentration	1 mg/ml
Purity	>95% by SDS-PAGE.
Clonality	Monoclonal
Isotype	IgG
Applications	WB
Target	CD36, CLA1, CD36 antigen-like 1, CD36L1, SRB1, Collagen type I receptor, thrombospondin receptor-like 1, SCARB1, Scavenger receptor class B member 1, CLA-1, SR-BI, CD36 and LIMPII analogous 1
Purification	Protein A/G purified from cell culture supernatant.
Endotoxin level	Please contact with the lab for this information.
Accession	Q8WTV0

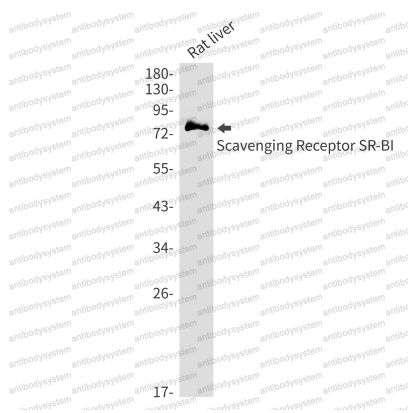
Recombinant Proteins & Antibodies

Stability and Storage

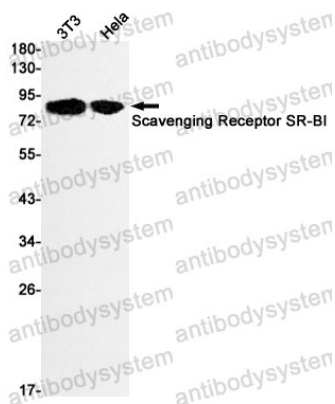
Use a manual defrost freezer and avoid repeated freeze thaw cycles. Store at 4 °C for frequent use. Store at -20 °C for twelve months from the date of receipt.

Note

For research use only.

Data Image

Western blot



Western blot

Western blot analysis of Scavenging Receptor SRBI in rat liver lysates using SCARB1 antibody.

Western blot analysis of Scavenging Receptor SRBI in 3T3, Hela lysates using Scavenging Receptor SRBI antibody.