

# Anti-ELMO1 Antibody (R2L54)

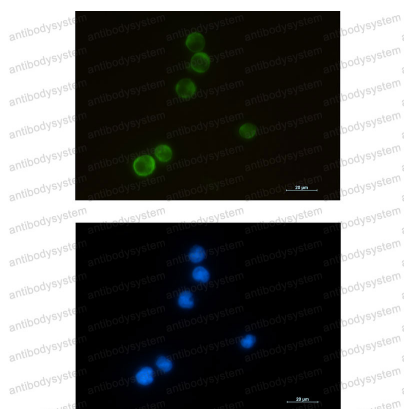
## Summary

---

<b>Catalog No.</b>	RHK04901
<b>Clone ID</b>	R2L54
<b>Host species</b>	Rabbit
<b>Tested applications</b>	IF: 1:50-1:200, IP: 1:20, WB: 1:500-1:1000
<b>Species reactivity</b>	Human, Mouse, Rat
<b>Form</b>	Liquid
<b>Storage buffer</b>	0.01M PBS, pH 7.4, 0.05% BSA, 50% Glycerol, 0.05% Sodium azide.
<b>Concentration</b>	1 mg/ml
<b>Purity</b>	>95% by SDS-PAGE.
<b>Clonality</b>	Monoclonal
<b>Isotype</b>	IgG
<b>Applications</b>	IF, IP, WB
<b>Target</b>	Engulfment and cell motility protein 1, ELMO1, Protein ced-12 homolog, KIAA0281
<b>Purification</b>	Protein A/G purified from cell culture supernatant.
<b>Endotoxin level</b>	Please contact with the lab for this information.
<b>Accession</b>	Q92556
<b>Stability and Storage</b>	Use a manual defrost freezer and avoid repeated freeze thaw cycles. Store at 4 °C for frequent use. Store at -20 °C for twelve months from the date of receipt.

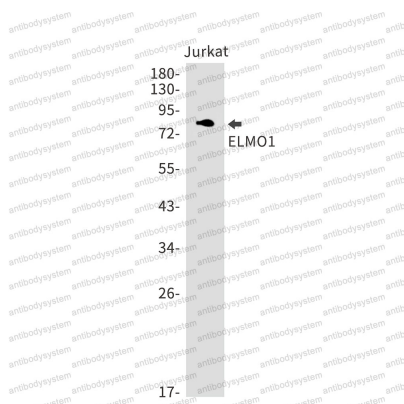
**Note** For research use only.

## Data Image



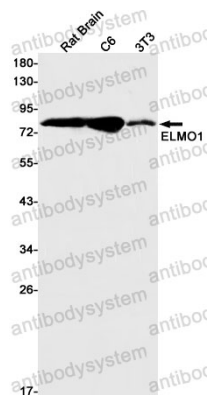
**Immunofluorescence**

Immunocytochemistry analysis of ELMO1 (green) in Jurkat using ELMO1 antibody, and DAPI (blue).



**Western blot**

Western blot analysis of ELMO1 in Jurkat lysates using ELMO1 antibody.



Western blot

Western blot analysis of ELMO1 in rat Brain, C6, 3T3 lysates using ELMO1 antibody