

Recombinant Human CCL2/MCP-1 Protein, N-His

Summary

Catalog No.	YHC97801
Alternative Names	HC11, MCP-1, MCP1, Monocyte chemotactic protein 1, Monocyte chemotactic and activating factor, Small-inducible cytokine A2, SCYA2, MCAF, Monocyte secretory protein JE, C-C motif chemokine 2, Monocyte chemoattractant protein 1, CCL2
Form	Lyophilized
Storage buffer	Lyophilized from a solution in PBS pH 7.4, 0.02% NLS, 1mM EDTA, 4% Trehalose, 1% Mannitol.
Purity	>90% as determined by SDS-PAGE.
Applications	ELISA, Immunogen, SDS-PAGE, WB, Bioactivity testing in progress
Endotoxin level	Please contact with the lab for this information.
Expression system	E. coli
Accession	P13500
Protein length	Gln24-Thr99
Nature	Recombinant
Predicted molecular weight	10.98 kDa
Stability and Storage	Use a manual defrost freezer and avoid repeated freeze thaw cycles. Store at 2 to 8°C for frequent use. Store at -20 to -80°C for twelve months from the date of receipt.
Reconstitution	Reconstitute in sterile water for a stock solution.
Species	Homo sapiens (Human)

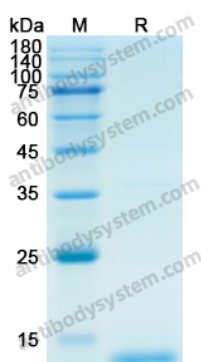
Shipping

In general, proteins are provided as lyophilized powder/frozen liquid. They are shipped out with dry ice/blue ice unless customers require otherwise.

Note

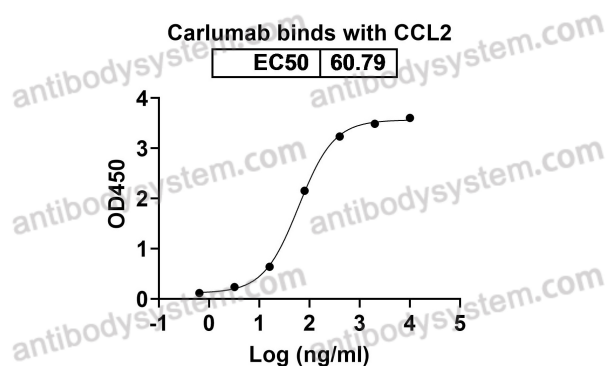
For research use only.

Data Image



SDS PAGE for recombinant Human CCL2 / MCP-1

SDS-PAGE

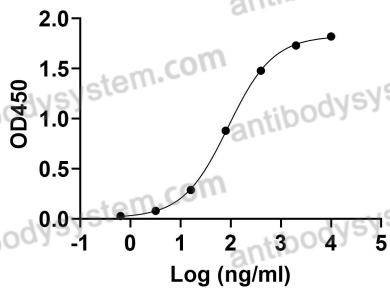


Detected Carlumab in indirect ELISAs.

Bioactivity

Anti-Human CCL2/MCP-1 Antibody (11k2)
binds with CCL2

EC50	89.10
------	-------



Bioactivity

Detects Human CCL2/MCP-1 Antibody (11k2) in indirect ELISAs.