

# Anti-BCL11A Antibody (R2L49)

## Summary

---

<b>Catalog No.</b>	RHK02002
<b>Clone ID</b>	R2L49
<b>Host species</b>	Rabbit
<b>Tested applications</b>	FCM: 1:20-1:100, IF: 1:50-1:200, IHC: 1:100-1:200, WB: 1:1000-1:2000
<b>Species reactivity</b>	Human, Mouse, Rat
<b>Form</b>	Liquid
<b>Storage buffer</b>	0.01M PBS, pH 7.4, 0.05% BSA, 50% Glycerol, 0.05% Sodium azide.
<b>Concentration</b>	1 mg/ml
<b>Purity</b>	>95% by SDS-PAGE.
<b>Clonality</b>	Monoclonal
<b>Isotype</b>	IgG
<b>Applications</b>	FCM, IF, IHC, WB
<b>Target</b>	B-cell CLL/lymphoma 11A, EVI-9, CTIP1, EVI9, Zinc finger protein 856, KIAA1809, B-cell lymphoma/leukemia 11A, COUP-TF-interacting protein 1, Ecotropic viral integration site 9 protein homolog, ZNF856, BCL11A, BCL-11A
<b>Purification</b>	Protein A/G purified from cell culture supernatant.
<b>Endotoxin level</b>	Please contact with the lab for this information.
<b>Accession</b>	Q9H165

**Stability and Storage**

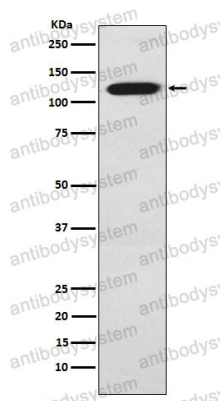
Use a manual defrost freezer and avoid repeated freeze thaw cycles. Store at 4 °C for frequent use. Store at -20 °C for twelve months from the date of receipt.

**Note**

For research use only.

**Data Image**

---



Western blot

Western blot analysis of Ctip1 expression in Jurkat cell lysate.