

Anti-AP3M1 Antibody (R2L48)

Summary

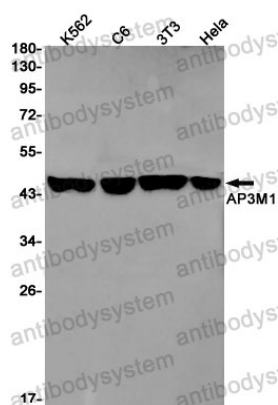
Catalog No.	RHK01601
Clone ID	R2L48
Host species	Rabbit
Tested applications	WB: 1:500-1:1000
Species reactivity	Human, Mouse, Rat
Form	Liquid
Storage buffer	0.01M PBS, pH 7.4, 0.05% BSA, 50% Glycerol, 0.05% Sodium azide.
Concentration	1 mg/ml
Purity	>95% by SDS-PAGE.
Clonality	Monoclonal
Isotype	IgG
Applications	WB
Target	AP-3 complex subunit mu-1, Mu3A-adaptin, AP-3 adaptor complex mu3A subunit, AP3M1, Mu-adaptin 3A, Adaptor-related protein complex 3 subunit mu-1
Purification	Protein A/G purified from cell culture supernatant.
Endotoxin level	Please contact with the lab for this information.
Accession	Q9Y2T2

Stability and Storage

Use a manual defrost freezer and avoid repeated freeze thaw cycles. Store at 4 °C for frequent use. Store at -20 °C for twelve months from the date of receipt.

Note

For research use only.

Data Image

Western blot

Western blot analysis of AP3M1 in K562, C6, 3T3, HeLa lysates using AP3M1 antibody.