

Anti-DPYSL5 Antibody (R2L46)

Summary

Catalog No.	RHK00301
Clone ID	R2L46
Host species	Rabbit
Tested applications	IHC: 1:100-1:200, IP: 1:20-1:50, WB: 1:1000-1:2000
Species reactivity	Human, Mouse, Rat
Form	Liquid
Storage buffer	0.01M PBS, pH 7.4, 0.05% BSA, 50% Glycerol, 0.05% Sodium azide.
Concentration	1 mg/ml
Purity	>95% by SDS-PAGE.
Clonality	Monoclonal
Isotype	IgG
Applications	IHC, IP, WB
Target	Collapsin response mediator protein 5, CRAM, CRMP-5, Dihydropyrimidinase-related protein 5, ULIP-6, UNC33-like phosphoprotein 6, CRMP5, ULIP6, DPYSL5, DRP-5, CRMP3-associated molecule
Purification	Protein A/G purified from cell culture supernatant.
Endotoxin level	Please contact with the lab for this information.
Accession	Q9BPU6

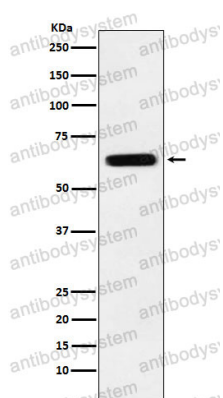
Stability and Storage

Use a manual defrost freezer and avoid repeated freeze thaw cycles. Store at 4 °C for frequent use. Store at -20 °C for twelve months from the date of receipt.

Note

For research use only.

Data Image



Western blot

Western blot analysis of CRMP5 expression in SH-SY5Y cell lysate.