

Anti-IGF2BP2 Antibody (R2L31)

Summary

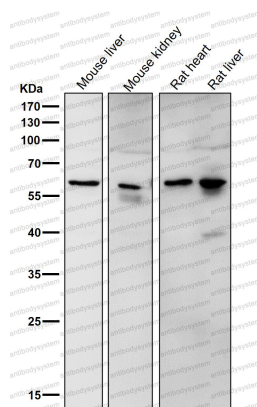
Catalog No.	RHJ91502
Clone ID	R2L31
Host species	Rabbit
Tested applications	IF: 1:50-1:200, IHC: 1:100-1:200, WB: 1:1000-1:2000
Species reactivity	Human, Mouse, Rat
Form	Liquid
Storage buffer	0.01M PBS, pH 7.4, 0.05% BSA, 50% Glycerol, 0.05% Sodium azide.
Concentration	1 mg/ml
Purity	>95% by SDS-PAGE.
Clonality	Monoclonal
Isotype	IgG
Applications	IF, IHC, WB
Target	Hepatocellular carcinoma autoantigen p62, IMP2, IGF-II mRNA-binding protein 2, IMP-2, VICKZ2, VICKZ family member 2, IGF2BP2, IGF2 mRNA-binding protein 2, Insulin-like growth factor 2 mRNA-binding protein 2
Purification	Protein A/G purified from cell culture supernatant.
Endotoxin level	Please contact with the lab for this information.
Accession	Q9Y6M1

Stability and Storage

Use a manual defrost freezer and avoid repeated freeze thaw cycles. Store at 4 °C for frequent use. Store at -20 °C for twelve months from the date of receipt.

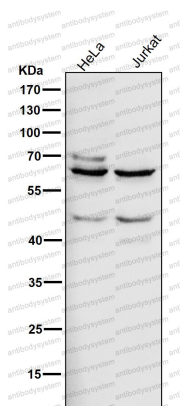
Note

For research use only.

Data Image

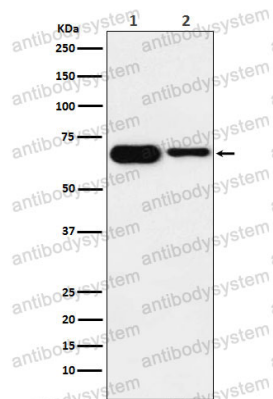
Western blot

All lanes use the Antibody at 1:2K dilution for 1 hour at room temperature.



Western blot

All lanes use the Antibody at 1:2K dilution for 1 hour at room temperature.



Western blot

Western blot analysis of IMP2 expression in (1) SH-SY5Y cell lysate; (2) Mouse heart lysate.