

Anti-CD321/F11R/JAM-A Antibody (R2L25)

Summary

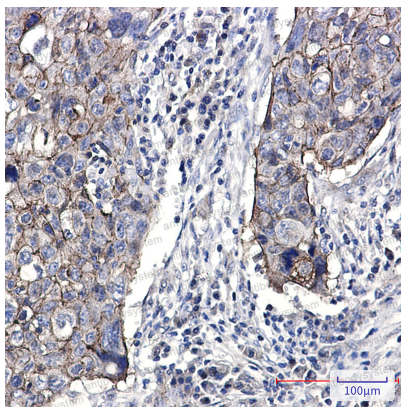
Catalog No.	RHJ90502
Clone ID	R2L25
Host species	Rabbit
Tested applications	IHC: 1:50-1:100, WB: 1:500-1:1000
Species reactivity	Human
Form	Liquid
Storage buffer	0.01M PBS, pH 7.4, 0.05% BSA, 50% Glycerol, 0.05% Sodium azide.
Concentration	1 mg/ml
Purity	>95% by SDS-PAGE.
Clonality	Monoclonal
Isotype	IgG
Applications	IHC, WB
Target	PAM-1, JAM1, Platelet F11 receptor, JCAM, JAM-A, F11R, Junctional adhesion molecule A, Junctional adhesion molecule 1, CD321, Platelet adhesion molecule 1, JAM-1
Purification	Protein A/G purified from cell culture supernatant.
Endotoxin level	Please contact with the lab for this information.
Accession	Q9Y624

Stability and Storage

Use a manual defrost freezer and avoid repeated freeze thaw cycles. Store at 4 °C for frequent use. Store at -20 °C for twelve months from the date of receipt.

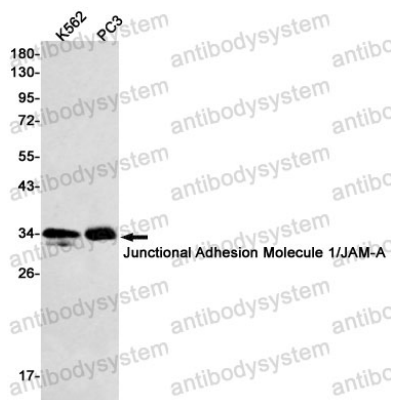
Note

For research use only.

Data Image

Immunohistochemical

Immunohistochemistry analysis of paraffin-embedded Human lung cancer using Junctional Adhesion Molecule 1 antibody. High-pressure and temperature Sodium Citrate pH 6.0 was used for antigen retrieval.



Western blot

Western blot analysis of Junctional Adhesion Molecule 1/JAMA in K562, PC-3 lysates using Junctional Adhesion Molecule 1 antibody.