

Anti-LYVE1 Antibody (R2L23)

Summary

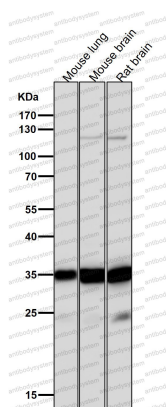
Catalog No.	RHJ90101
Clone ID	R2L23
Host species	Rabbit
Tested applications	WB: 1:1000-1:2000
Species reactivity	Human, Mouse, Rat
Form	Liquid
Storage buffer	0.01M PBS, pH 7.4, 0.05% BSA, 50% Glycerol, 0.05% Sodium azide.
Concentration	1 mg/ml
Purity	>95% by SDS-PAGE.
Clonality	Monoclonal
Isotype	IgG
Applications	WB
Target	Cell surface retention sequence-binding protein 1, XLKD1, LYVE-1, Hyaluronic acid receptor, Extracellular link domain-containing protein 1, CRSBP-1, LYVE1, CRSBP1, HAR, Lymphatic vessel endothelial hyaluronic acid receptor 1
Purification	Protein A/G purified from cell culture supernatant.
Endotoxin level	Please contact with the lab for this information.
Accession	Q9Y5Y7

Stability and Storage

Use a manual defrost freezer and avoid repeated freeze thaw cycles. Store at 4 °C for frequent use. Store at -20 °C for twelve months from the date of receipt.

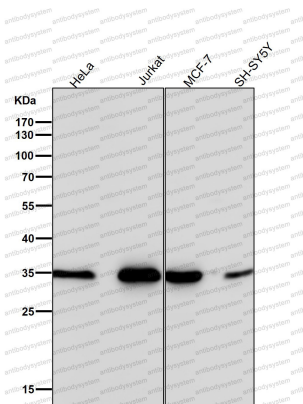
Note

For research use only.

Data Image

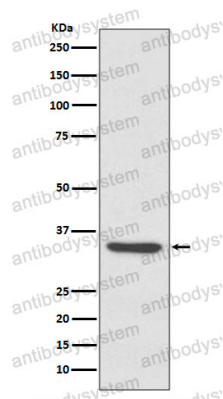
Western blot

All lanes use the Antibody at 1:2K dilution for 1 hour at room temperature.



Western blot

All lanes use the Antibody at 1:2K dilution for 1 hour at room temperature.



Western blot

Western blot analysis of LYVE1 expression in A549 cell lysate.