

Anti-HYOU1 Antibody (R2L16)

Summary

Catalog No.	RHJ88503
Clone ID	R2L16
Host species	Rabbit
Tested applications	IHC: 1:50-1:100, WB: 1:500-1:1000
Species reactivity	Human, Mouse, Rat
Form	Liquid
Storage buffer	0.01M PBS, pH 7.4, 0.05% BSA, 50% Glycerol, 0.05% Sodium azide.
Concentration	1 mg/ml
Purity	>95% by SDS-PAGE.
Clonality	Monoclonal
Isotype	IgG
Applications	IHC, WB
Target	150 kDa oxygen-regulated protein, GRP170, 170 kDa glucose-regulated protein, HYOU1, ORP150, GRP-170, Hypoxia up-regulated protein 1, ORP-150
Purification	Protein A/G purified from cell culture supernatant.
Endotoxin level	Please contact with the lab for this information.
Accession	Q9Y4L1

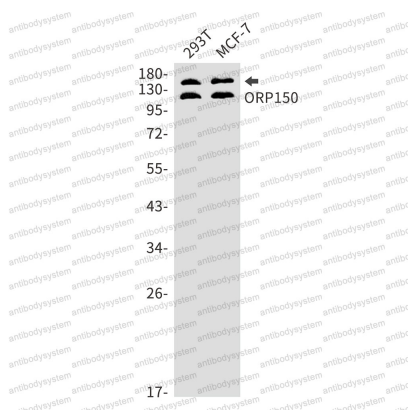
Recombinant Proteins & Antibodies

Stability and Storage

Use a manual defrost freezer and avoid repeated freeze thaw cycles. Store at 4 °C for frequent use. Store at -20 °C for twelve months from the date of receipt.

Note

For research use only.

Data Image

Western blot

Western blot analysis of ORP150 in 293T, MCF-7 lysates using ORP150 antibody.