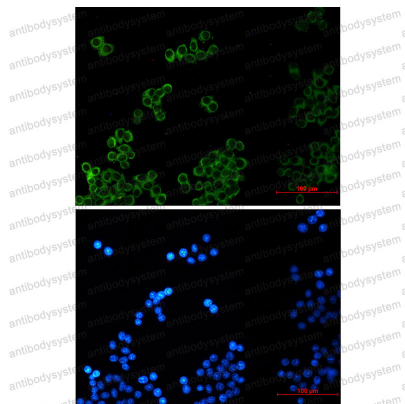


Anti-PLAA Antibody (R2L03)

Summary

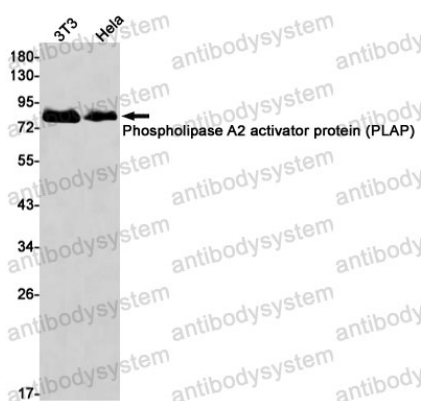
Catalog No.	RHJ84901
Clone ID	R2L03
Host species	Rabbit
Tested applications	IF: 1:50-1:200, WB: 1:500-1:1000
Species reactivity	Human, Mouse
Form	Liquid
Storage buffer	0.01M PBS, pH 7.4, 0.05% BSA, 50% Glycerol, 0.05% Sodium azide.
Concentration	1 mg/ml
Purity	>95% by SDS-PAGE.
Clonality	Monoclonal
Isotype	IgG
Applications	IF, WB
Target	PLAP, PLA2P, Phospholipase A-2-activating protein, PLAA
Purification	Protein A/G purified from cell culture supernatant.
Endotoxin level	Please contact with the lab for this information.
Accession	Q9Y263
Stability and Storage	Use a manual defrost freezer and avoid repeated freeze thaw cycles. Store at 4 °C for frequent use. Store at -20 °C for twelve months from the date of receipt.
Note	For research use only.

Data Image



Immunofluorescence

Immunocytochemistry analysis of Phospho-lipase A2 Activator Protein (green) in HeLa using Phospho-lipase A2 Activator Protein antibody, and DAPI (blue).



Western blot

Western blot analysis of Phospho-lipase A2 activator protein (PLAP) in 3T3, HeLa lysates using Phospho-lipase A2 activator protein (PLAP) antibody.