

Anti-CD338/ABCG2 Antibody (R2K91)

Summary

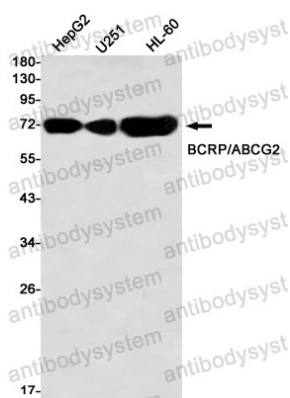
Catalog No.	RHJ82301
Clone ID	R2K91
Host species	Rabbit
Tested applications	WB: 1:500-1:1000
Species reactivity	Human
Form	Liquid
Storage buffer	0.01M PBS, pH 7.4, 0.05% BSA, 50% Glycerol, 0.05% Sodium azide.
Concentration	1 mg/ml
Purity	>95% by SDS-PAGE.
Clonality	Monoclonal
Isotype	IgG
Applications	WB
Target	Urate exporter, ABCP, BCRP1, ABCG2, CD338, BCRP, MXR, Broad substrate specificity ATP-binding cassette transporter ABCG2, Placenta-specific ATP-binding cassette transporter, Breast cancer resistance protein, Mitoxantrone resistance-associated protein, CDw338, ATP-binding cassette sub-family G member 2
Purification	Protein A/G purified from cell culture supernatant.
Endotoxin level	Please contact with the lab for this information.
Accession	Q9UNQ0

Stability and Storage

Use a manual defrost freezer and avoid repeated freeze thaw cycles. Store at 4 °C for frequent use. Store at -20 °C for twelve months from the date of receipt.

Note

For research use only.

Data Image

Western blot

Western blot analysis of BCRP/ABCG2 in HepG2, U251, HL-60 lysates using ABCG2 antibody.