

Anti-Phospho-RPS6KB2S6K2 (Ser371) Antibody (R2K66)

Summary

| | |
|----------------------------|---|
| Catalog No. | RHJ73504 |
| Clone ID | R2K66 |
| Host species | Rabbit |
| Tested applications | WB: 1:500-1:1000 |
| Species reactivity | Human, Mouse, Rat |
| Form | Liquid |
| Storage buffer | 0.01M PBS, pH 7.4, 0.05% BSA, 50% Glycerol, 0.05% Sodium azide. |
| Concentration | 1 mg/ml |
| Purity | >95% by SDS-PAGE. |
| Clonality | Monoclonal |
| Isotype | IgG |
| Applications | WB |
| Target | p70 ribosomal S6 kinase beta, 70 kDa ribosomal protein S6 kinase 2, p70 S6 kinase beta, p70 S6KB, p70-S6K 2, S6K2, STK14B, S6K-beta, p70-beta, S6 kinase-related kinase, SRK, S6K-beta-2, Serine/threonine-protein kinase 14B, RPS6KB2, p70 S6K-beta, P70S6K2, Ribosomal protein S6 kinase beta-2 |
| Purification | Protein A/G purified from cell culture supernatant. |
| Endotoxin level | Please contact with the lab for this information. |

Recombinant Proteins & Antibodies

Accession

Q9UBS0

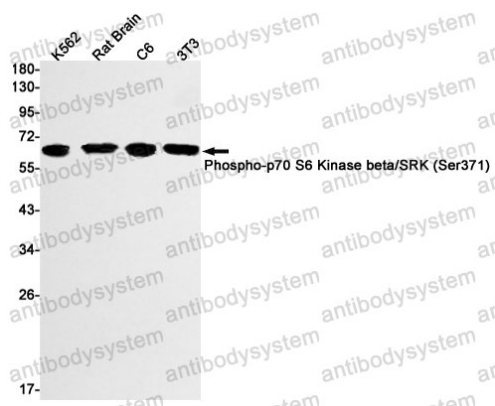
Stability and Storage

Use a manual defrost freezer and avoid repeated freeze thaw cycles. Store at 4 °C for frequent use. Store at -20 °C for twelve months from the date of receipt.

Note

For research use only.

Data Image



Western blot

Western blot analysis of Phospho-p70 S6 Kinase beta/SRK (Ser371) in K562, rat Brain, C6, 3T3 lysates using Phospho-S6K2 (Ser371) antibody.