

Anti-PLEKHA1 Antibody (R2K26)

Summary

Catalog No.	RHJ58801
Clone ID	R2K26
Host species	Rabbit
Tested applications	IP: 1:20, WB: 1:500-1:1000
Species reactivity	Human
Form	Liquid
Storage buffer	0.01M PBS, pH 7.4, 0.05% BSA, 50% Glycerol, 0.05% Sodium azide.
Concentration	1 mg/ml
Purity	>95% by SDS-PAGE.
Clonality	Monoclonal
Isotype	IgG
Applications	IP, WB
Target	PH domain-containing family A member 1, Pleckstrin homology domain-containing family A member 1, Tandem PH domain-containing protein 1, TAPP-1, PLEKHA1, TAPP1
Purification	Protein A/G purified from cell culture supernatant.
Endotoxin level	Please contact with the lab for this information.
Accession	Q9HB21

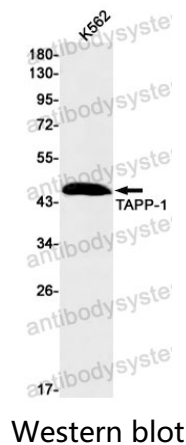
Stability and Storage

Use a manual defrost freezer and avoid repeated freeze thaw cycles. Store at 4 °C for frequent use. Store at -20 °C for twelve months from the date of receipt.

Note

For research use only.

Data Image



Western blot analysis of TAPP1 in K562 lysates using PLEKHA1 antibody.

Western blot