

# Anti-MDA5/IFIH1 Antibody (R2K10)

## Summary

---

<b>Catalog No.</b>	RHJ51903
<b>Clone ID</b>	R2K10
<b>Host species</b>	Rabbit
<b>Tested applications</b>	IF: 1:50-1:200, WB: 1:1000-1:2000
<b>Species reactivity</b>	Human
<b>Form</b>	Liquid
<b>Storage buffer</b>	0.01M PBS, pH 7.4, 0.05% BSA, 50% Glycerol, 0.05% Sodium azide.
<b>Concentration</b>	1 mg/ml
<b>Purity</b>	>95% by SDS-PAGE.
<b>Clonality</b>	Monoclonal
<b>Isotype</b>	IgG
<b>Applications</b>	IF, WB
<b>Target</b>	MDA-5, IFIH1, Helicard, Clinically amyopathic dermatomyositis autoantigen 140 kDa, Interferon-induced with helicase C domain protein 1, Helicase with 2 CARD domains, RNA helicase-DEAD box protein 116, RIG-I-like receptor 2, Interferon-induced helicase C domain-containing protein 1, MDA5, Murabutide down-regulated protein, Melanoma differentiation-associated protein 5, CADM-140 autoantigen, RH116, RLR-2
<b>Purification</b>	Protein A/G purified from cell culture supernatant.
<b>Endotoxin level</b>	Please contact with the lab for this information.

**Accession**

Q9BYX4

**Stability and Storage**

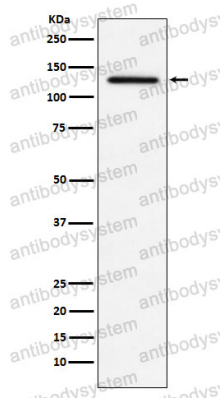
Use a manual defrost freezer and avoid repeated freeze thaw cycles. Store at 4 °C for frequent use. Store at -20 °C for twelve months from the date of receipt.

**Note**

For research use only.

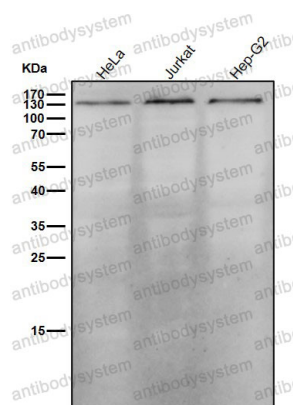
## Data Image

---



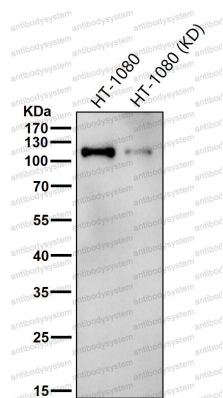
Western blot

Western blot analysis of MDA5 expression in THP1 cell lysate.



Western blot

All lanes use the Antibody at 1:1K dilution for 1 hour at room temperature.



Western blot

All lanes use the Antibody at 1:1K dilution for 1 hour at room temperature.