

Anti-ACE2 Antibody (R2K09)

Summary

Catalog No.	RHJ51602
Clone ID	R2K09
Host species	Rabbit
Tested applications	IF: 1:50-1:200, IHC: 1:100-1:200, IP: 1:20-1:50, WB: 1:1000-1:2000
Species reactivity	Human, Mouse, Rat
Form	Liquid
Storage buffer	0.01M PBS, pH 7.4, 0.05% BSA, 50% Glycerol, 0.05% Sodium azide.
Concentration	1 mg/ml
Purity	>95% by SDS-PAGE.
Clonality	Monoclonal
Isotype	IgG
Applications	IF, IHC, IP, WB
Target	Angiotensin-converting enzyme homolog, ACE2, ACEH, Metalloprotease MPROT15, Angiotensin-converting enzyme-related carboxypeptidase, Angiotensin-converting enzyme 2, ACE-related carboxypeptidase
Purification	Protein A/G purified from cell culture supernatant.
Endotoxin level	Please contact with the lab for this information.
Accession	Q9BYF1

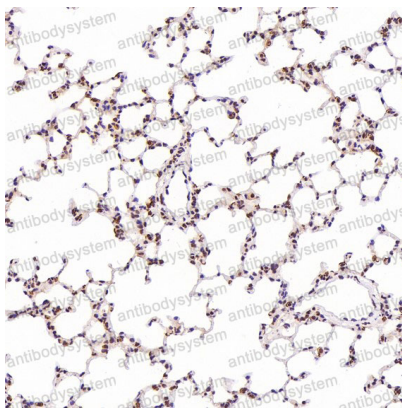
Stability and Storage

Use a manual defrost freezer and avoid repeated freeze thaw cycles. Store at 4 °C for frequent use. Store at -20 °C for twelve months from the date of receipt.

Note

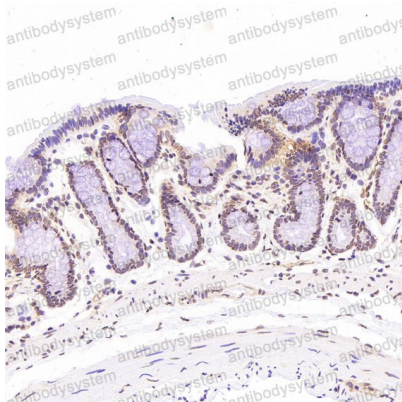
For research use only.

Data Image



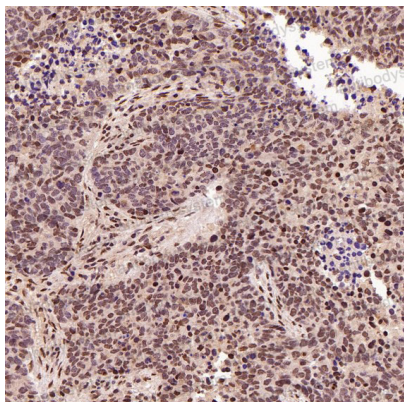
Immunohistochemical

Immunohistochemical analysis of paraffin-embedded Rat liver, using the Antibody at 1:200 dilution.

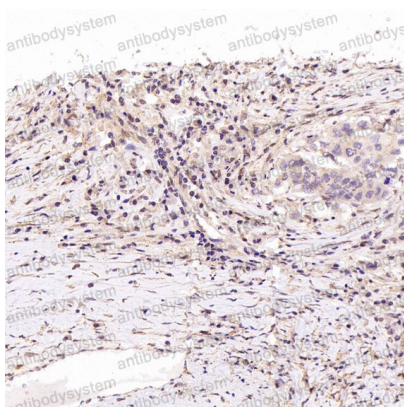


Immunohistochemical

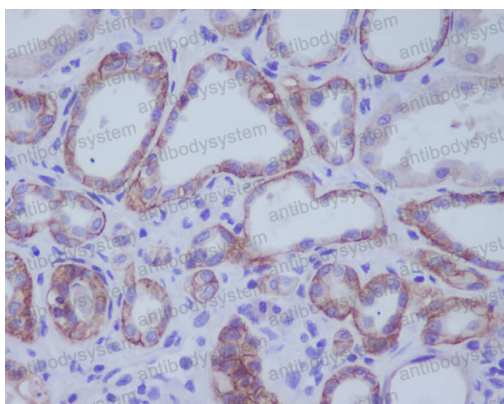
Immunohistochemical analysis of paraffin-embedded Rat stomach, using the Antibody at 1:200 dilution.

**Immunohistochemical**

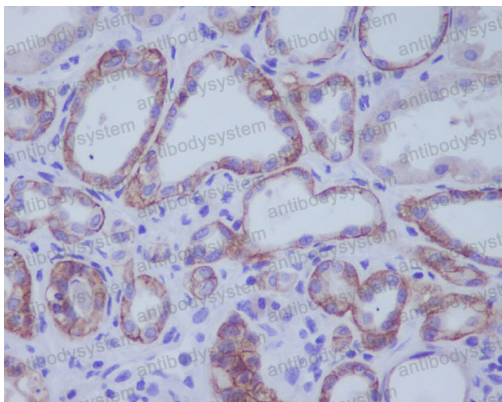
Immunohistochemical analysis of paraffin-embedded Human lung large cell cancer, using the Antibody at 1:100 dilution.

**Immunohistochemical**

Immunohistochemical analysis of paraffin-embedded Human squamous cell carcinoma , using the Antibody at 1:100 dilution.

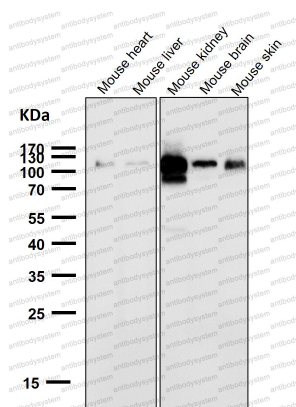
**Immunohistochemical**

Immunohistochemical analysis of paraffin-embedded human kidney, using ACE2 Antibody.



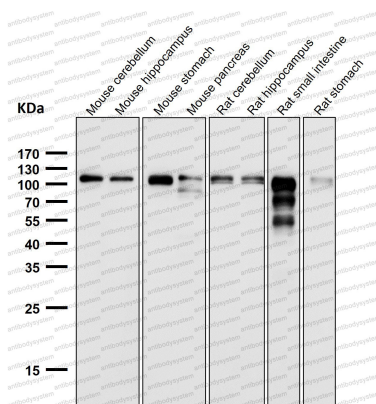
Immunohistochemical analysis of paraffin-embedded human kidney, using ACE2 Antibody.

Immunohistochemical



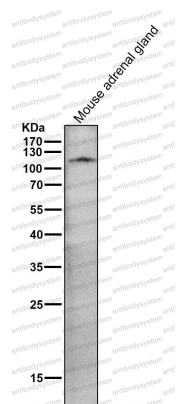
Western blot

All lanes use the Antibody at 1:1K dilution for 1 hour at room temperature.



Western blot

All lanes use the Antibody at 1:1K dilution for 1 hour at room temperature.



Western blot

All lanes use the Antibody at 1:1K dilution for 1 hour at room temperature.