

Anti-CD273/PD-L2/PDCD1LG2 Antibody (R2J99)

Summary

Catalog No.	RHJ48502
Clone ID	R2J99
Host species	Rabbit
Tested applications	WB: 1:500-1:1000
Species reactivity	Human, Rat
Form	Liquid
Storage buffer	0.01M PBS, pH 7.4, 0.05% BSA, 50% Glycerol, 0.05% Sodium azide.
Concentration	1 mg/ml
Purity	>95% by SDS-PAGE.
Clonality	Monoclonal
Isotype	IgG
Applications	WB
Target	PDCD1 ligand 2, B7-DC, PD-L2, PDCD1LG2, PDCD1L2, PDL2, Butyrophilin B7-DC, Programmed death ligand 2, Programmed cell death 1 ligand 2, CD273, B7DC, PD-1 ligand 2
Purification	Protein A/G purified from cell culture supernatant.
Endotoxin level	Please contact with the lab for this information.
Accession	Q9BQ51

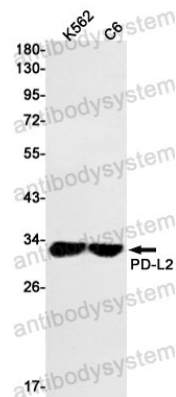
Stability and Storage

Use a manual defrost freezer and avoid repeated freeze thaw cycles. Store at 4 °C for frequent use. Store at -20 °C for twelve months from the date of receipt.

Note

For research use only.

Data Image



Western blot

Western blot analysis of PDL2 in K562, C6 lysates using PD L2 antibody.