

Anti-GDF15/MIC1 Antibody (R2J98)

Summary

Catalog No.	RHJ48301
Clone ID	R2J98
Host species	Rabbit
Tested applications	WB: 1:500-1:1000
Species reactivity	Human
Form	Liquid
Storage buffer	0.01M PBS, pH 7.4, 0.05% BSA, 50% Glycerol, 0.05% Sodium azide.
Concentration	1 mg/ml
Purity	>95% by SDS-PAGE.
Clonality	Monoclonal
Isotype	IgG
Applications	WB
Target	PLAB, Placental bone morphogenetic protein, MIC1, NRG-1, PTGFB, NSAID-regulated gene 1 protein, GDF15, NAG-1, MIC-1, Prostate differentiation factor, NSAID-activated gene 1 protein, Growth/differentiation factor 15, Macrophage inhibitory cytokine 1, Placental TGF-beta, GDF-15, PDF
Purification	Protein A/G purified from cell culture supernatant.
Endotoxin level	Please contact with the lab for this information.
Accession	Q99988

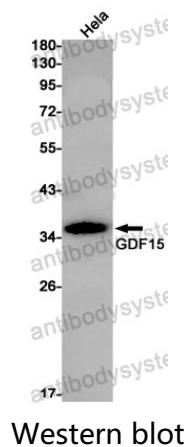
Stability and Storage

Use a manual defrost freezer and avoid repeated freeze thaw cycles. Store at 4 °C for frequent use. Store at -20 °C for twelve months from the date of receipt.

Note

For research use only.

Data Image



Western blot analysis of GDF15 in HeLa lysates using GDF15 antibody.