

Anti-MGLL Antibody (R2J87)

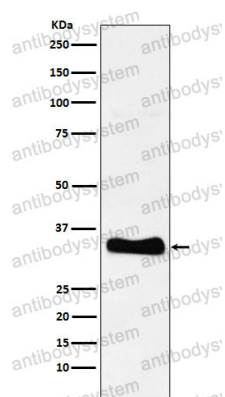
Summary

Catalog No.	RHJ45902
Clone ID	R2J87
Host species	Rabbit
Tested applications	WB: 1:1000-1:2000
Species reactivity	Human
Form	Liquid
Storage buffer	0.01M PBS, pH 7.4, 0.05% BSA, 50% Glycerol, 0.05% Sodium azide.
Concentration	1 mg/ml
Purity	>95% by SDS-PAGE.
Clonality	Monoclonal
Isotype	IgG
Applications	WB
Target	Lysophospholipase-like, MGLL, Monoacylglycerol lipase, Lysophospholipase homolog, MGL, Monoglyceride lipase, HU-K5, MAGL
Purification	Protein A/G purified from cell culture supernatant.
Endotoxin level	Please contact with the lab for this information.
Accession	Q99685
Stability and Storage	Use a manual defrost freezer and avoid repeated freeze thaw cycles. Store at 4 °C for frequent use. Store at -20 °C for twelve months from the date of receipt.

Note

For research use only.

Data Image



Western blot

Western blot analysis of Monoacylglycerol Lipase expression in human heart lysate.