

# Anti-PARK7/DJ1 Antibody (R2J81)

## Summary

---

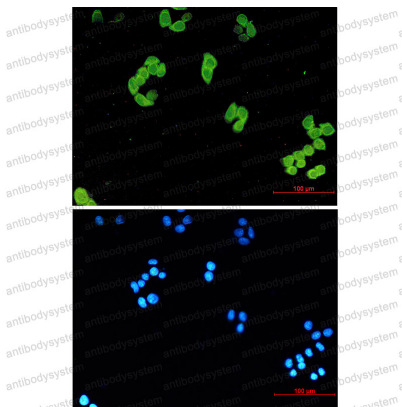
<b>Catalog No.</b>	RHJ44001
<b>Clone ID</b>	R2J81
<b>Host species</b>	Rabbit
<b>Tested applications</b>	IF: 1:50-1:200, IHC: 1:50-1:100, IP: 1:20, WB: 1:500-1:1000
<b>Species reactivity</b>	Human, Mouse, Rat
<b>Form</b>	Liquid
<b>Storage buffer</b>	0.01M PBS, pH 7.4, 0.05% BSA, 50% Glycerol, 0.05% Sodium azide.
<b>Concentration</b>	1 mg/ml
<b>Purity</b>	>95% by SDS-PAGE.
<b>Clonality</b>	Monoclonal
<b>Isotype</b>	IgG
<b>Applications</b>	IF, IHC, IP, WB
<b>Target</b>	Parkinson disease protein 7, Oncogene DJ1, Parkinsonism-associated deglycase, DJ-1, PARK7, Maillard deglycase, Protein/nucleic acid deglycase DJ-1, Protein DJ-1
<b>Purification</b>	Protein A/G purified from cell culture supernatant.
<b>Endotoxin level</b>	Please contact with the lab for this information.
<b>Accession</b>	Q99497

**Stability and Storage**

Use a manual defrost freezer and avoid repeated freeze thaw cycles. Store at 4 °C for frequent use. Store at -20 °C for twelve months from the date of receipt.

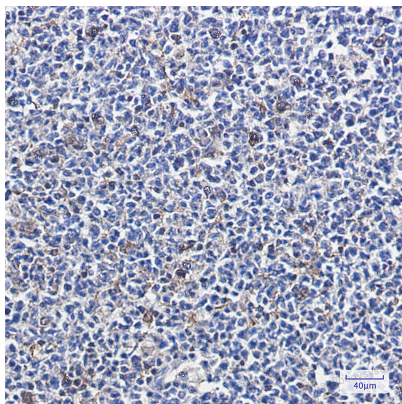
**Note**

For research use only.

**Data Image**

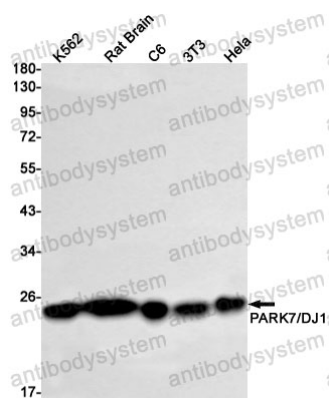
Immunofluorescence

Immunocytochemistry analysis of PARK7/DJ1 (green) in HeLa using PARK7/DJ1 antibody, and DAPI (blue)



Immunohistochemical

Immunohistochemistry analysis of paraffin-embedded Human tonsil using PARK7/DJ1 antibody. High-pressure and temperature Sodium Citrate pH 6.0 was used for antigen retrieval.



Western blot

Western blot analysis of PARK7/DJ1 in K562, rat Brain, C6, 3T3, Hela lysates using PARK7/DJ1 antibody.