

# Anti-SIRT1 Antibody (R2J68)

## Summary

---

<b>Catalog No.</b>	RMJ38701
<b>Clone ID</b>	R2J68
<b>Host species</b>	Rabbit
<b>Tested applications</b>	WB: 1:500-1:1000
<b>Species reactivity</b>	Human, Mouse, Rat
<b>Form</b>	Liquid
<b>Storage buffer</b>	0.01M PBS, pH 7.4, 0.05% BSA, 50% Glycerol, 0.05% Sodium azide.
<b>Concentration</b>	1 mg/ml
<b>Purity</b>	>95% by SDS-PAGE.
<b>Clonality</b>	Monoclonal
<b>Isotype</b>	IgG
<b>Applications</b>	WB
<b>Target</b>	NAD-dependent protein deacylase sirtuin-1, hSIR2, NAD-dependent protein deacetylase sirtuin-1, SIR2-like protein 1, 75SirT1, SIR2L1, Regulatory protein SIR2 homolog 1, SIRT1, hSIRT1
<b>Purification</b>	Protein A/G purified from cell culture supernatant.
<b>Endotoxin level</b>	Please contact with the lab for this information.
<b>Accession</b>	Q923E4

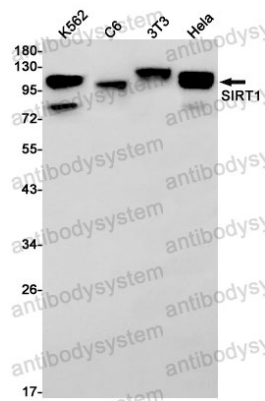


**Stability and Storage**

Use a manual defrost freezer and avoid repeated freeze thaw cycles. Store at 4 °C for frequent use. Store at -20 °C for twelve months from the date of receipt.

**Note**

For research use only.

**Data Image**

Western blot

Western blot analysis of SIRT1 in K562, C6, 3T3, HeLa lysates using SIRT1 antibody.