

# Anti-CASP10 Antibody (R2J52)

## Summary

---

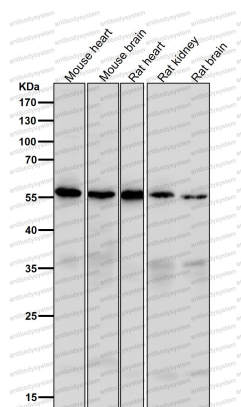
<b>Catalog No.</b>	RHJ33802
<b>Clone ID</b>	R2J52
<b>Host species</b>	Rabbit
<b>Tested applications</b>	FCM: 1:20-1:100, IHC: 1:100-1:200, IP: 1:20-1:50, WB: 1:1000-1:2000
<b>Species reactivity</b>	Human
<b>Form</b>	Liquid
<b>Storage buffer</b>	0.01M PBS, pH 7.4, 0.05% BSA, 50% Glycerol, 0.05% Sodium azide.
<b>Concentration</b>	1 mg/ml
<b>Purity</b>	>95% by SDS-PAGE.
<b>Clonality</b>	Monoclonal
<b>Isotype</b>	IgG
<b>Applications</b>	FCM, IHC, IP, WB
<b>Target</b>	FAS-associated death domain protein interleukin-1B-converting enzyme 2, FLICE2, CASP-10, MCH4, ICE-like apoptotic protease 4, Apoptotic protease Mch-4, CASP10, Caspase-10
<b>Purification</b>	Protein A/G purified from cell culture supernatant.
<b>Endotoxin level</b>	Please contact with the lab for this information.
<b>Accession</b>	Q92851

**Stability and Storage**

Use a manual defrost freezer and avoid repeated freeze thaw cycles. Store at 4 °C for frequent use. Store at -20 °C for twelve months from the date of receipt.

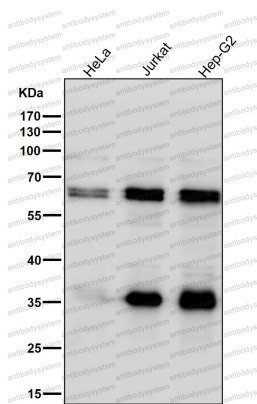
**Note**

For research use only.

**Data Image**

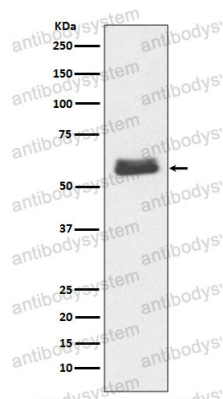
Western blot

All lanes use the Antibody at 1:1K dilution for 1 hour at room temperature.



Western blot

All lanes use the Antibody at 1:1K dilution for 1 hour at room temperature.



Western blot

Western blot analysis of Caspase-10 expression in Jurkat cell lysate.