

Anti-PROX1 Antibody (R2J50)

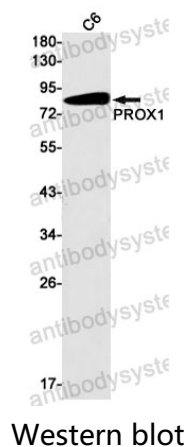
Summary

Catalog No.	RHJ33201
Clone ID	R2J50
Host species	Rabbit
Tested applications	WB: 1:500-1:1000
Species reactivity	Rat
Form	Liquid
Storage buffer	0.01M PBS, pH 7.4, 0.05% BSA, 50% Glycerol, 0.05% Sodium azide.
Concentration	1 mg/ml
Purity	>95% by SDS-PAGE.
Clonality	Monoclonal
Isotype	IgG
Applications	WB
Target	PROX1, Prospero homeobox protein 1, PROX-1, Homeobox prospero-like protein PROX1
Purification	Protein A/G purified from cell culture supernatant.
Endotoxin level	Please contact with the lab for this information.
Accession	Q92786
Stability and Storage	Use a manual defrost freezer and avoid repeated freeze thaw cycles. Store at 4 °C for frequent use. Store at -20 °C for twelve months from the date of receipt.

Note

For research use only.

Data Image



Western blot analysis of PROX1 in C6 lysates using PROX1 antibody.