

Anti-ANP32B Antibody (R2J43)

Summary

Catalog No.	RHJ32401
Clone ID	R2J43
Host species	Rabbit
Tested applications	IF: 1:50-1:200, IHC: 1:50-1:100, WB: 1:500-1:1000
Species reactivity	Human, Rat
Form	Liquid
Storage buffer	0.01M PBS, pH 7.4, 0.05% BSA, 50% Glycerol, 0.05% Sodium azide.
Concentration	1 mg/ml
Purity	>95% by SDS-PAGE.
Clonality	Monoclonal
Isotype	IgG
Applications	IF, IHC, WB
Target	APRIL, Acidic leucine-rich nuclear phosphoprotein 32 family member B, PHAPI2, Silver-stainable protein SSP29, Acidic protein rich in leucines, ANP32B, Putative HLA-DR-associated protein I-2
Purification	Protein A/G purified from cell culture supernatant.
Endotoxin level	Please contact with the lab for this information.
Accession	Q92688

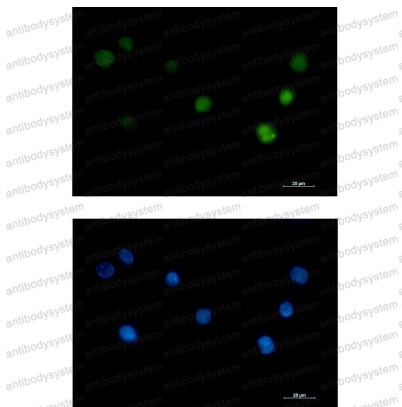
Stability and Storage

Use a manual defrost freezer and avoid repeated freeze thaw cycles. Store at 4 °C for frequent use. Store at -20 °C for twelve months from the date of receipt.

Note

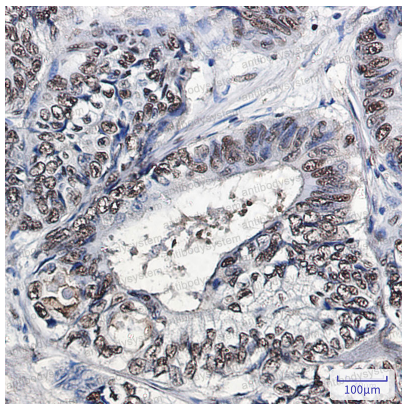
For research use only.

Data Image



Immunofluorescence

Immunocytochemistry analysis of PHAPI2 (green) in K562 using PHAPI2 antibody, and DAPI (blue).



Immunohistochemical

Immunohistochemistry analysis of paraffin-embedded Human colon cancer tissue using PHAPI2/APRIL antibody. High-pressure and temperature Sodium Citrate pH 6.0 was used for antigen retrieval.



Western blot

Western blot analysis of PHAPI2 in K562, C6 lysates using PHAPI2 antibody.