

Anti-FRS2 Antibody (R2J28)

Summary

Catalog No.	RHJ29102
Clone ID	R2J28
Host species	Rabbit
Tested applications	FCM: 1:20-1:100, IP: 1:20-1:50, WB: 1:1000-1:2000
Species reactivity	Human
Form	Liquid
Storage buffer	0.01M PBS, pH 7.4, 0.05% BSA, 50% Glycerol, 0.05% Sodium azide.
Concentration	1 mg/ml
Purity	>95% by SDS-PAGE.
Clonality	Monoclonal
Isotype	IgG
Applications	FCM, IP, WB
Target	FGFR substrate 2, FRS2, Fibroblast growth factor receptor substrate 2, FGFR-signaling adaptor SNT, Suc1-associated neurotrophic factor target 1, SNT-1
Purification	Protein A/G purified from cell culture supernatant.
Endotoxin level	Please contact with the lab for this information.
Accession	Q8WU20

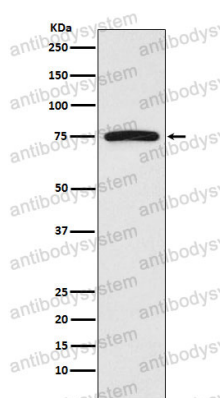
Stability and Storage

Use a manual defrost freezer and avoid repeated freeze thaw cycles. Store at 4 °C for frequent use. Store at -20 °C for twelve months from the date of receipt.

Note

For research use only.

Data Image



Western blot

Western blot analysis of FRS2 expression in HeLa cell lysate.