

# Anti-SYNE1 Antibody (R2J25)

## Summary

---

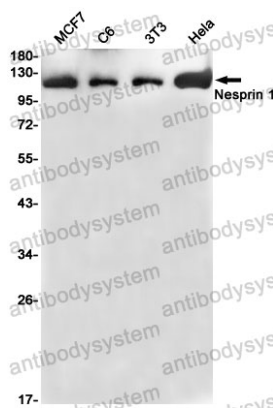
<b>Catalog No.</b>	RHJ25501
<b>Clone ID</b>	R2J25
<b>Host species</b>	Rabbit
<b>Tested applications</b>	IF: 1:50-1:200, IHC: 1:50-1:100, WB: 1:500-1:1000
<b>Species reactivity</b>	Human, Mouse, Rat
<b>Form</b>	Liquid
<b>Storage buffer</b>	0.01M PBS, pH 7.4, 0.05% BSA, 50% Glycerol, 0.05% Sodium azide.
<b>Concentration</b>	1 mg/ml
<b>Purity</b>	>95% by SDS-PAGE.
<b>Clonality</b>	Monoclonal
<b>Isotype</b>	IgG
<b>Applications</b>	IF, IHC, WB
<b>Target</b>	Nuclear envelope spectrin repeat protein 1, Myocyte nuclear envelope protein 1, KIAA1262, KIAA1756, KASH domain-containing protein 1, KIAA0796, SYNE1, KASH1, Syne-1, Nesprin-1, Enaptin, C6orf98, MYNE1, Myne-1, Synaptic nuclear envelope protein 1
<b>Purification</b>	Protein A/G purified from cell culture supernatant.
<b>Endotoxin level</b>	Please contact with the lab for this information.
<b>Accession</b>	Q8NF91

**Stability and Storage**

Use a manual defrost freezer and avoid repeated freeze thaw cycles. Store at 4 °C for frequent use. Store at -20 °C for twelve months from the date of receipt.

**Note**

For research use only.

**Data Image**

Western blot

Western blot analysis of Nesprin 1 in MCF-7, C6, 3T3, HeLa lysates using Nesprin1 antibody.