

Anti-SYNE1 Antibody (R2J24)

Summary

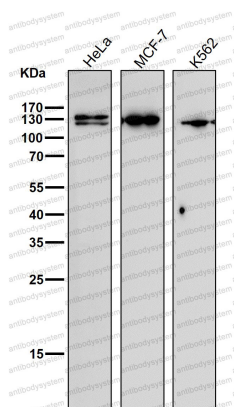
Catalog No.	RHJ25502
Clone ID	R2J24
Host species	Rabbit
Tested applications	FCM: 1:20-1:100, IF: 1:50-1:200, IHC: 1:100-1:200, WB: 1:1000-1:2000
Species reactivity	Human, Mouse, Rat
Form	Liquid
Storage buffer	0.01M PBS, pH 7.4, 0.05% BSA, 50% Glycerol, 0.05% Sodium azide.
Concentration	1 mg/ml
Purity	>95% by SDS-PAGE.
Clonality	Monoclonal
Isotype	IgG
Applications	FCM, IF, IHC, WB
Target	Nuclear envelope spectrin repeat protein 1, Myocyte nuclear envelope protein 1, KIAA1262, KIAA1756, KASH domain-containing protein 1, KIAA0796, SYNE1, KASH1, Syne-1, Nesprin-1, Enaptin, C6orf98, MYNE1, Myne-1, Synaptic nuclear envelope protein 1
Purification	Protein A/G purified from cell culture supernatant.
Endotoxin level	Please contact with the lab for this information.
Accession	Q8NF91

Stability and Storage

Use a manual defrost freezer and avoid repeated freeze thaw cycles. Store at 4 °C for frequent use. Store at -20 °C for twelve months from the date of receipt.

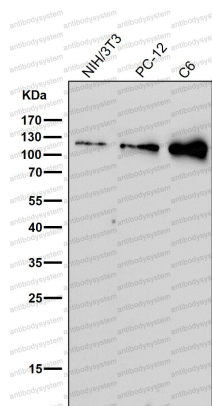
Note

For research use only.

Data Image

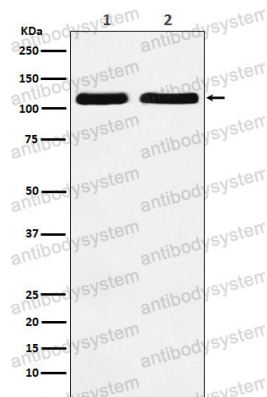
Western blot

All lanes use the Antibody at 1:2K dilution for 1 hour at room temperature.



Western blot

All lanes use the Antibody at 1:2K dilution for 1 hour at room temperature.



Western blot

Western blot analysis of Nesprin 1 expression in (1) HeLa cell lysate; (2) RAW264.7 cell lysate.