

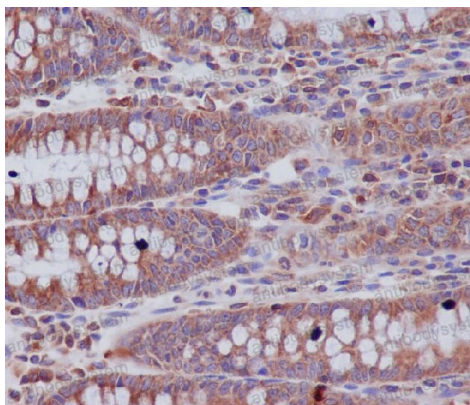
Anti-ABCF1 Antibody (R2J23)

Summary

Catalog No.	RHJ24301
Clone ID	R2J23
Host species	Rabbit
Tested applications	IF: 1:50-1:200, IHC: 1:100-1:200, WB: 1:1000-1:2000
Species reactivity	Human, Rat
Form	Liquid
Storage buffer	0.01M PBS, pH 7.4, 0.05% BSA, 50% Glycerol, 0.05% Sodium azide.
Concentration	1 mg/ml
Purity	>95% by SDS-PAGE.
Clonality	Monoclonal
Isotype	IgG
Applications	IF, IHC, WB
Target	ABCF1, ATP-binding cassette sub-family F member 1, ATP-binding cassette 50, ABC50, TNF-alpha-stimulated ABC protein
Purification	Protein A/G purified from cell culture supernatant.
Endotoxin level	Please contact with the lab for this information.
Accession	Q8NE71
Stability and Storage	Use a manual defrost freezer and avoid repeated freeze thaw cycles. Store at 4 °C for frequent use. Store at -20 °C for twelve months from the date of receipt.

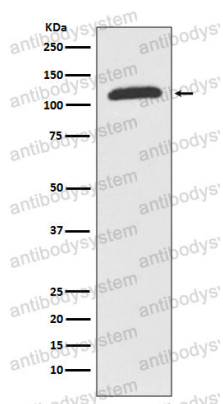
Note For research use only.

Data Image



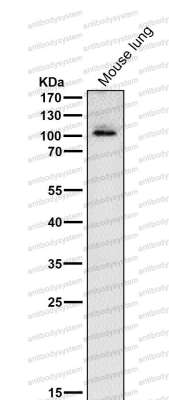
Immunohistochemical

Immunohistochemical analysis of paraffin-embedded human colon, using ABCF1 Antibody.



Western blot

Western blot analysis of ABCF1 expression in K562 cell lysate.



Western blot

All lanes use the Antibody at 1:2Kdilution for 1 hour at room temperature.