

# Anti-SIRT6 Antibody (R2J14)

## Summary

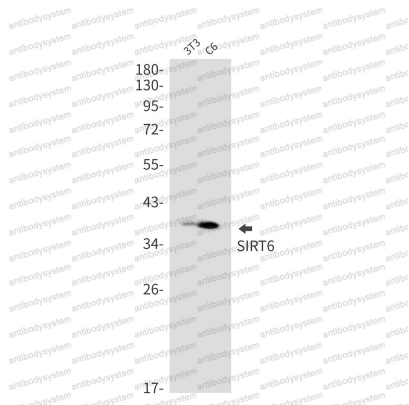
---

<b>Catalog No.</b>	RHJ22901
<b>Clone ID</b>	R2J14
<b>Host species</b>	Rabbit
<b>Tested applications</b>	IF: 1:50-1:200, IHC: 1:50-1:100, IP: 1:20, WB: 1:500-1:1000
<b>Species reactivity</b>	Human, Mouse, Rat
<b>Form</b>	Liquid
<b>Storage buffer</b>	0.01M PBS, pH 7.4, 0.05% BSA, 50% Glycerol, 0.05% Sodium azide.
<b>Concentration</b>	1 mg/ml
<b>Purity</b>	>95% by SDS-PAGE.
<b>Clonality</b>	Monoclonal
<b>Isotype</b>	IgG
<b>Applications</b>	IF, IHC, IP, WB
<b>Target</b>	SIR2-like protein 6, SIRT6, NAD-dependent protein deacetylase sirtuin-6, SIR2L6, Regulatory protein SIR2 homolog 6
<b>Purification</b>	Protein A/G purified from cell culture supernatant.
<b>Endotoxin level</b>	Please contact with the lab for this information.
<b>Accession</b>	Q8N6T7
<b>Stability and Storage</b>	Use a manual defrost freezer and avoid repeated freeze thaw cycles. Store at 4 °C for frequent use. Store at -20 °C for twelve months from the date of receipt.

### Note

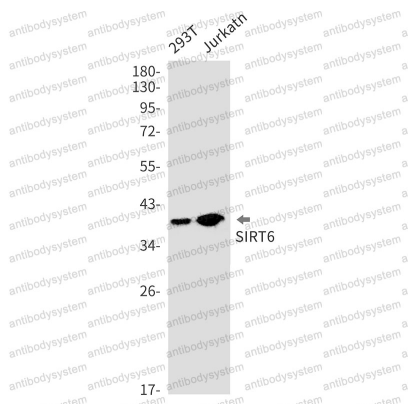
For research use only.

## Data Image



Western blot

Western blot analysis of SIRT6 in 3T3, C6 lysates using SIRT6 antibody.



Western blot

Western blot analysis of SIRT6 in 293T, Jurkat lysates using SIRT6 antibody.