

# Anti-METTL3 Antibody (R2H98)

## Summary

---

<b>Catalog No.</b>	RHJ15401
<b>Clone ID</b>	R2H98
<b>Host species</b>	Rabbit
<b>Tested applications</b>	FCM: 1:20-1:100, IF: 1:50-1:200, IHC: 1:100-1:200, IP: 1:20-1:50, WB: 1:1000-1:2000
<b>Species reactivity</b>	Human, Mouse, Rat
<b>Form</b>	Liquid
<b>Storage buffer</b>	0.01M PBS, pH 7.4, 0.05% BSA, 50% Glycerol, 0.05% Sodium azide.
<b>Concentration</b>	1 mg/ml
<b>Purity</b>	>95% by SDS-PAGE.
<b>Clonality</b>	Monoclonal
<b>Isotype</b>	IgG
<b>Applications</b>	FCM, IF, IHC, IP, WB
<b>Target</b>	METTL3, N6-adenosine-methyltransferase 70 kDa subunit, N6-adenosine-methyltransferase catalytic subunit, MTA70, Methyltransferase-like protein 3, MT-A70, hMETTL3
<b>Purification</b>	Protein A/G purified from cell culture supernatant.
<b>Endotoxin level</b>	Please contact with the lab for this information.
<b>Accession</b>	Q86U44

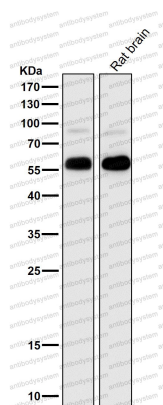
## Stability and Storage

Use a manual defrost freezer and avoid repeated freeze thaw cycles. Store at 4 °C for frequent use. Store at -20 °C for twelve months from the date of receipt.

## Note

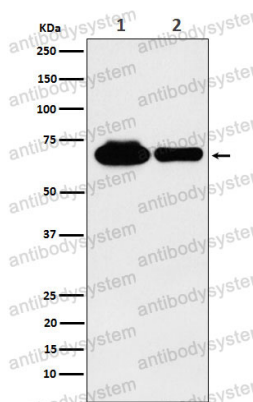
For research use only.

## Data Image



Western blot

All lanes use the Antibody at 1:2K dilution for 1 hour at room temperature.



Western blot

Western blot analysis of METTL3 expression in (1) 293 cell lysate; (2) RAW 264.7 cell lysate.