

# Anti-PTF1A Antibody (R2H95)

## Summary

---

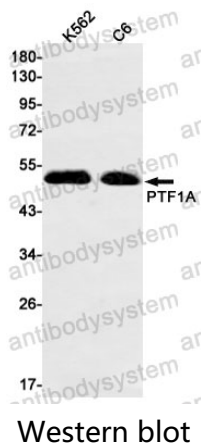
<b>Catalog No.</b>	RMJ13301
<b>Clone ID</b>	R2H95
<b>Host species</b>	Rabbit
<b>Tested applications</b>	IP: 1:20, WB: 1:500-1:1000
<b>Species reactivity</b>	Human, Rat
<b>Form</b>	Liquid
<b>Storage buffer</b>	0.01M PBS, pH 7.4, 0.05% BSA, 50% Glycerol, 0.05% Sodium azide.
<b>Concentration</b>	1 mg/ml
<b>Purity</b>	>95% by SDS-PAGE.
<b>Clonality</b>	Monoclonal
<b>Isotype</b>	IgG
<b>Applications</b>	IP, WB
<b>Target</b>	bHLHa29, p48 DNA-binding subunit of transcription factor PTF1, Pancreas-specific transcription factor 1a, BHLHA29, Pancreas transcription factor 1 subunit alpha, PTF1-p48, Class A basic helix-loop-helix protein 29, bHLH transcription factor p48, PTF1A, PTF1P48
<b>Purification</b>	Protein A/G purified from cell culture supernatant.
<b>Endotoxin level</b>	Please contact with the lab for this information.
<b>Accession</b>	Q9QX98

**Stability and Storage**

Use a manual defrost freezer and avoid repeated freeze thaw cycles. Store at 4 °C for frequent use. Store at -20 °C for twelve months from the date of receipt.

**Note**

For research use only.

**Data Image**

Western blot analysis of PTF1A in K562, C6 lysates using PTF1A antibody.