

# Anti-CRTC3 Antibody (R2H90)

## Summary

---

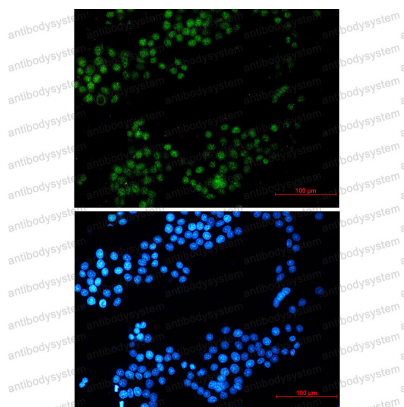
<b>Catalog No.</b>	RHJ08101
<b>Clone ID</b>	R2H90
<b>Host species</b>	Rabbit
<b>Tested applications</b>	IF: 1:50-1:200, WB: 1:500-1:1000
<b>Species reactivity</b>	Human, Mouse, Rat
<b>Form</b>	Liquid
<b>Storage buffer</b>	0.01M PBS, pH 7.4, 0.05% BSA, 50% Glycerol, 0.05% Sodium azide.
<b>Concentration</b>	1 mg/ml
<b>Purity</b>	>95% by SDS-PAGE.
<b>Clonality</b>	Monoclonal
<b>Isotype</b>	IgG
<b>Applications</b>	IF, WB
<b>Target</b>	CRTC3, Transducer of regulated cAMP response element-binding protein 3, Transducer of CREB protein 3, TORC3, TORC-3, CREB-regulated transcription coactivator 3
<b>Purification</b>	Protein A/G purified from cell culture supernatant.
<b>Endotoxin level</b>	Please contact with the lab for this information.
<b>Accession</b>	Q6UUV7

**Stability and Storage**

Use a manual defrost freezer and avoid repeated freeze thaw cycles. Store at 4 °C for frequent use. Store at -20 °C for twelve months from the date of receipt.

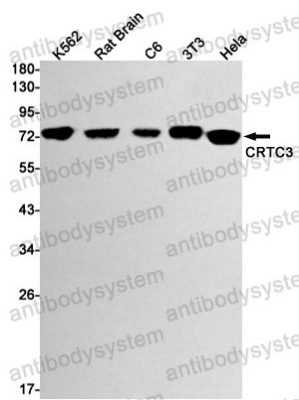
**Note**

For research use only.

**Data Image**

Immunofluorescence

Immunocytochemistry analysis of CRTC3 (green) in HeLa using CRTC3 antibody, and DAPI (blue).



Western blot

Western blot analysis of CRTC3 in K562, rat Brain, C6, 3T3, HeLa lysates using CRTC3 antibody.