

Anti-SFRP4 Antibody (R2H85)

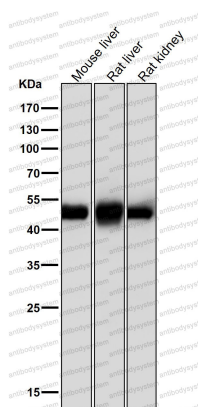
Summary

Catalog No.	RHJ05202
Clone ID	R2H85
Host species	Rabbit
Tested applications	FCM: 1:20-1:100, IF: 1:50-1:200, IHC: 1:100-1:200, WB: 1:1000-1:2000
Species reactivity	Human, Mouse, Rat
Form	Liquid
Storage buffer	0.01M PBS, pH 7.4, 0.05% BSA, 50% Glycerol, 0.05% Sodium azide.
Concentration	1 mg/ml
Purity	>95% by SDS-PAGE.
Clonality	Monoclonal
Isotype	IgG
Applications	FCM, IF, IHC, WB
Target	Secreted frizzled-related protein 4, sFRP-4, FrpHE, SFRP4, Frizzled protein, human endometrium, FRPHE
Purification	Protein A/G purified from cell culture supernatant.
Endotoxin level	Please contact with the lab for this information.
Accession	Q6FHJ7
Stability and Storage	Use a manual defrost freezer and avoid repeated freeze thaw cycles. Store at 4 °C for frequent use. Store at -20 °C for twelve months from the date of receipt.

Note

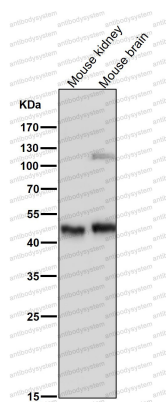
For research use only.

Data Image



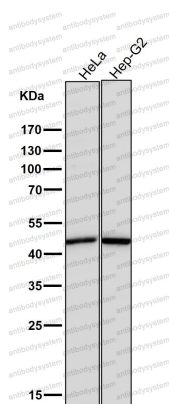
Western blot

All lanes use the Antibody at 1:1K dilution for 1 hour at room temperature.



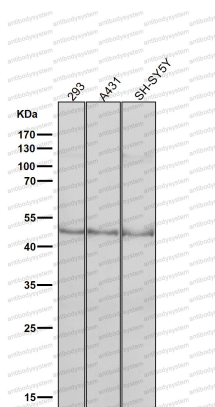
Western blot

All lanes use the Antibody at 1:1K dilution for 1 hour at room temperature.



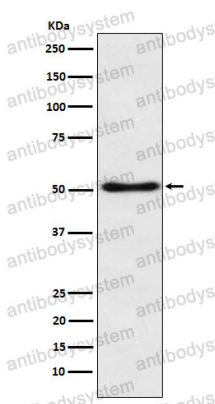
Western blot

All lanes use the Antibody at 1:1K dilution for 1 hour at room temperature.



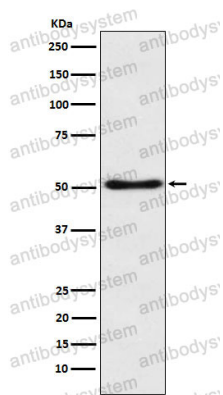
Western blot

All lanes use the Antibody at 1:1K dilution for 1 hour at room temperature.



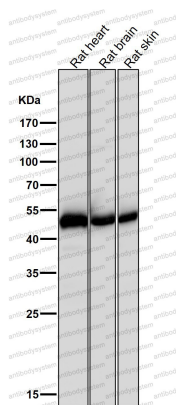
Western blot

Western blot analysis of SFRP4 expression in 293T cell lysate.



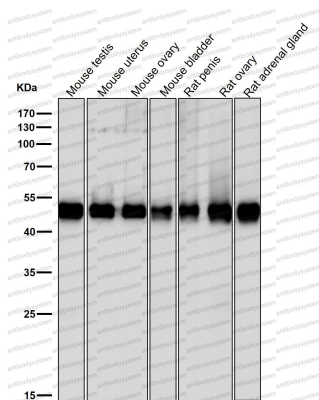
Western blot

Western blot analysis of SFRP4 expression in 293T cell lysate.



Western blot

All lanes use the Antibody at 1:1K dilution for 1 hour at room temperature.



Western blot

All lanes use the Antibody at 1:1K dilution for 1 hour at room temperature.