

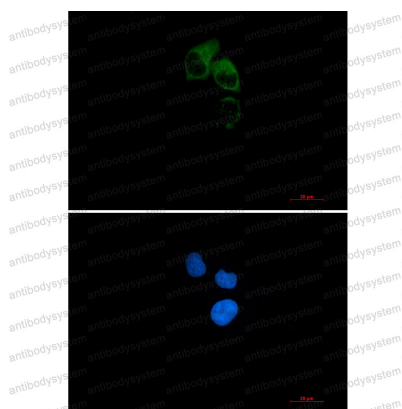
Anti-CEP55 Antibody (R2H80)

Summary

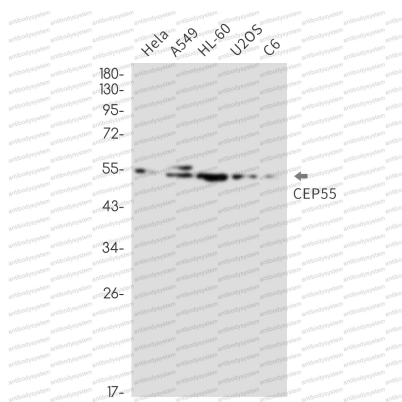
Catalog No.	RHH87101
Clone ID	R2H80
Host species	Rabbit
Tested applications	IF: 1:50-1:200, WB: 1:500-1:1000
Species reactivity	Human, Rat
Form	Liquid
Storage buffer	0.01M PBS, pH 7.4, 0.05% BSA, 50% Glycerol, 0.05% Sodium azide.
Concentration	1 mg/ml
Purity	>95% by SDS-PAGE.
Clonality	Monoclonal
Isotype	IgG
Applications	IF, WB
Target	Centrosomal protein of 55 kDa, Cep55, C10orf3, CEP55, Up-regulated in colon cancer 6, URCC6
Purification	Protein A/G purified from cell culture supernatant.
Endotoxin level	Please contact with the lab for this information.
Accession	Q53EZ4
Stability and Storage	Use a manual defrost freezer and avoid repeated freeze thaw cycles. Store at 4 °C for frequent use. Store at -20 °C for twelve months from the date of receipt.

Note

For research use only.

Data Image**Immunofluorescence**

Immunocytochemistry analysis of CEP55 (green) in Hela using CEP55 antibody, and DAPI (blue).

**Western blot**

Western blot analysis of CEP55 in Hela, A549, HL-60, U2OS, C6 lysates using CEP55 antibody.