

Anti-CRTC2 Antibody (R2H79)

Summary

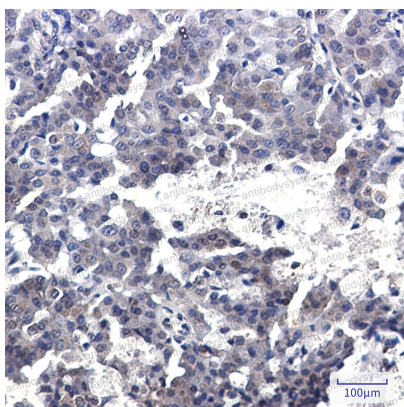
| | |
|----------------------------|---|
| Catalog No. | RHH86801 |
| Clone ID | R2H79 |
| Host species | Rabbit |
| Tested applications | IHC: 1:50-1:100, IP: 1:20, WB: 1:500-1:1000 |
| Species reactivity | Human |
| Form | Liquid |
| Storage buffer | 0.01M PBS, pH 7.4, 0.05% BSA, 50% Glycerol, 0.05% Sodium azide. |
| Concentration | 1 mg/ml |
| Purity | >95% by SDS-PAGE. |
| Clonality | Monoclonal |
| Isotype | IgG |
| Applications | IHC, IP, WB |
| Target | CREB-regulated transcription coactivator 2, TORC-2, Transducer of CREB protein 2, CRTC2, Transducer of regulated cAMP response element-binding protein 2, TORC2 |
| Purification | Protein A/G purified from cell culture supernatant. |
| Endotoxin level | Please contact with the lab for this information. |
| Accession | Q53ET0 |

Stability and Storage

Use a manual defrost freezer and avoid repeated freeze thaw cycles. Store at 4 °C for frequent use. Store at -20 °C for twelve months from the date of receipt.

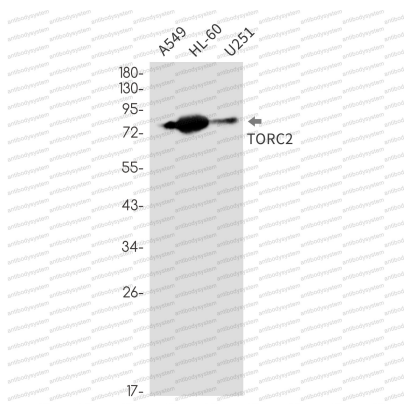
Note

For research use only.

Data Image

Immunohistochemical

Immunohistochemistry analysis of paraffin-embedded Human breast cancer using TORC2 antibody. High-pressure and temperature Sodium Citrate pH 6.0 was used for antigen retrieval.



Western blot

Western blot analysis of TORC2 in A549, HL-60, U251 lysates using CREB Regulated Transcription Coactivator 2 antibody.