

Anti-KCTD21 Antibody (R2H72)

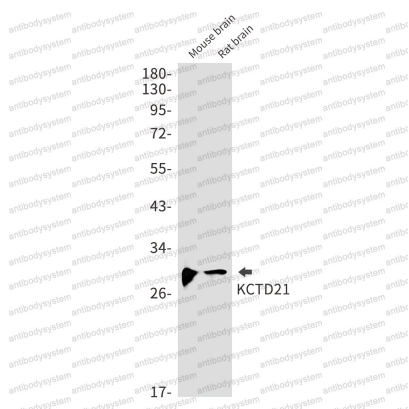
Summary

Catalog No.	RHH78401
Clone ID	R2H72
Host species	Rabbit
Tested applications	WB: 1:500-1:1000
Species reactivity	Human, Mouse, Rat
Form	Liquid
Storage buffer	0.01M PBS, pH 7.4, 0.05% BSA, 50% Glycerol, 0.05% Sodium azide.
Concentration	1 mg/ml
Purity	>95% by SDS-PAGE.
Clonality	Monoclonal
Isotype	IgG
Applications	WB
Target	KCTD21, BTB/POZ domain-containing protein KCTD21, KCASH2 protein, Potassium channel tetramerization domain-containing protein 21
Purification	Protein A/G purified from cell culture supernatant.
Endotoxin level	Please contact with the lab for this information.
Accession	Q4G0X4
Stability and Storage	Use a manual defrost freezer and avoid repeated freeze thaw cycles. Store at 4 °C for frequent use. Store at -20 °C for twelve months from the date of receipt.

Note

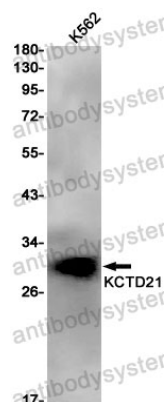
For research use only.

Data Image



Western blot

Western blot analysis of KCTD21 in mouse brain, rat brain lysates using KCTD21 antibody.



Western blot

Western blot analysis of KCTD21 in K562 lysates using KCTD21 antibody.